

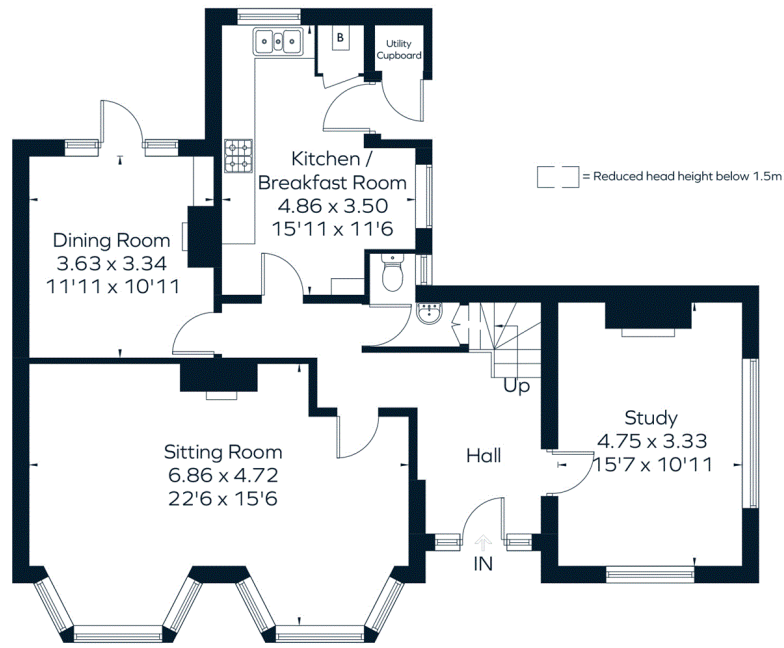
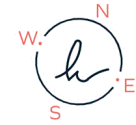
Fir Tree Road, Leatherhead, KT22

Approximate Area = 168.7 sq m / 1816 sq ft

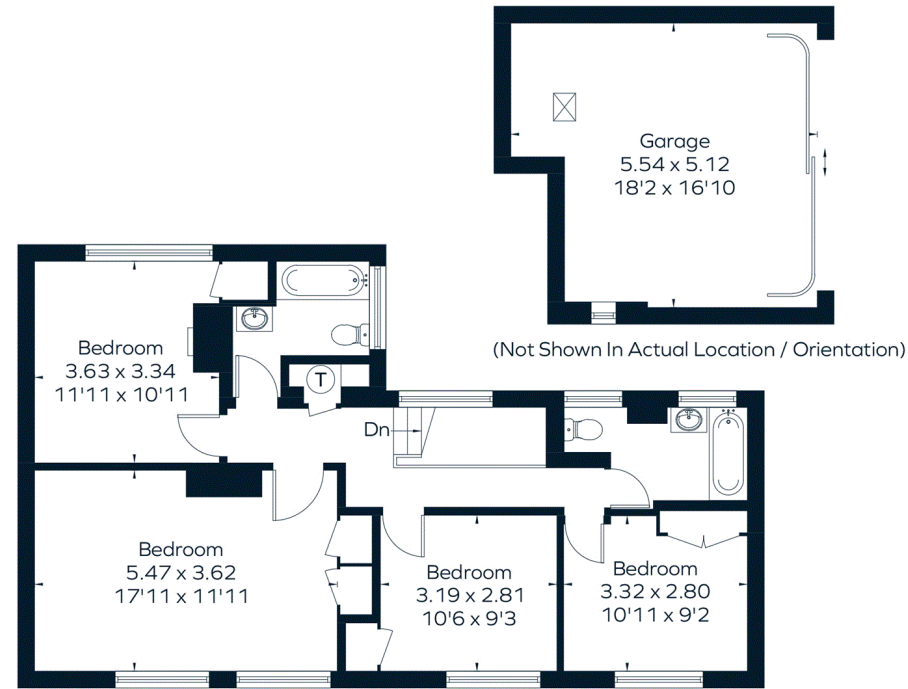
Garage / Utility Cupboard = 26.3 sq m / 283 sq ft

Total = 195 sq m / 2099 sq ft

Including Limited Use Area (2.9 sq m / 31 sq ft)



Ground Floor



First Floor