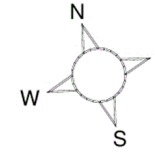
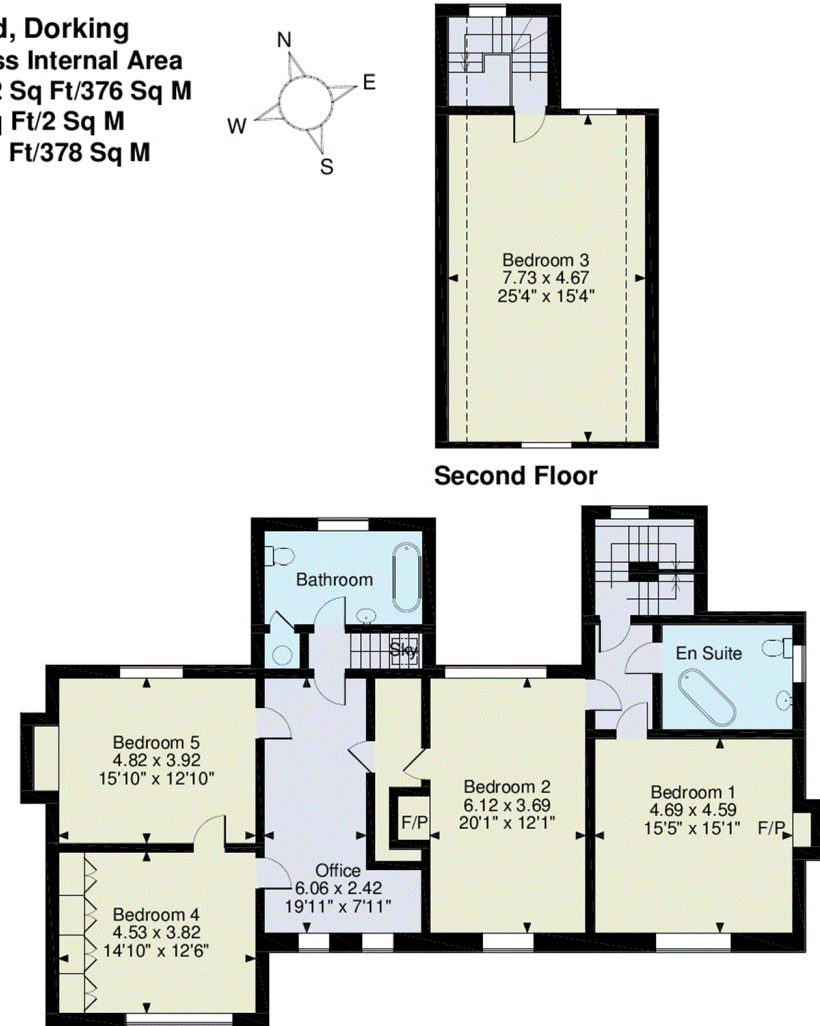


Rusper Road, Dorking
Approximate Gross Internal Area
Main House = 4052 Sq Ft/376 Sq M
Store = 17 Sq Ft/2 Sq M
Total = 4069 Sq Ft/378 Sq M



Ground Floor



First Floor

FOR ILLUSTRATIVE PURPOSES ONLY - NOT TO SCALE
 The position & size of doors, windows, appliances and other features are approximate only.
 □ □ □ □ Denotes restricted head height
 © ehouse. Unauthorised reproduction prohibited. Drawing ref. dig/8437490/SS