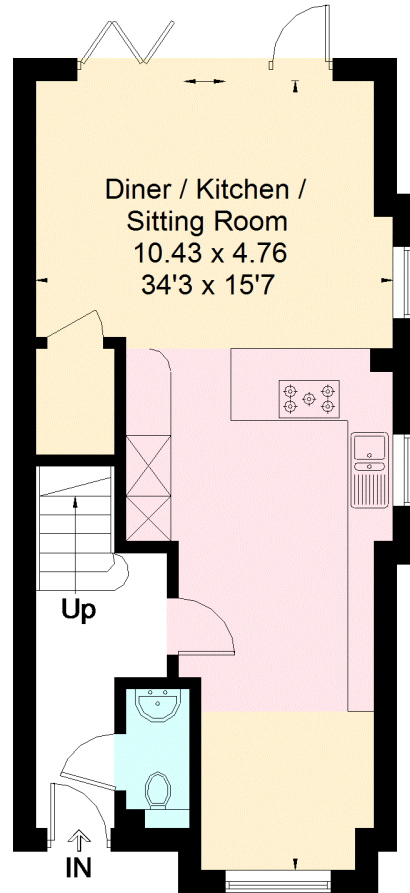


Moores Road, Dorking

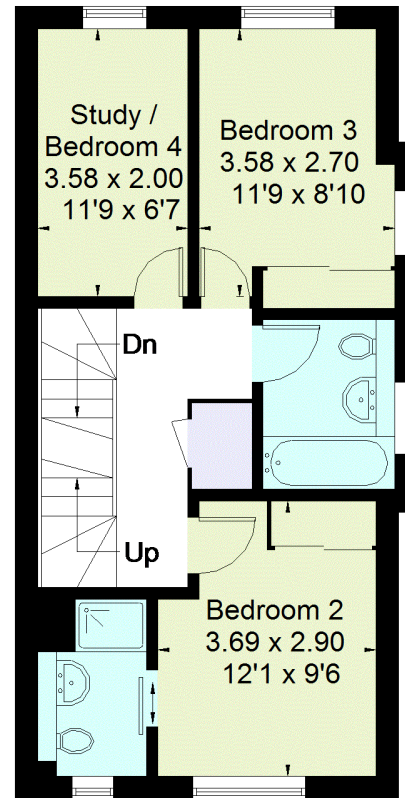
Approximate Gross Internal Area = 130.3 sq m / 1402 sq ft
 Garage = 14.2 sq m / 153 sq ft
 Total = 144.5 sq m / 1555 sq ft
 (Including Eaves)



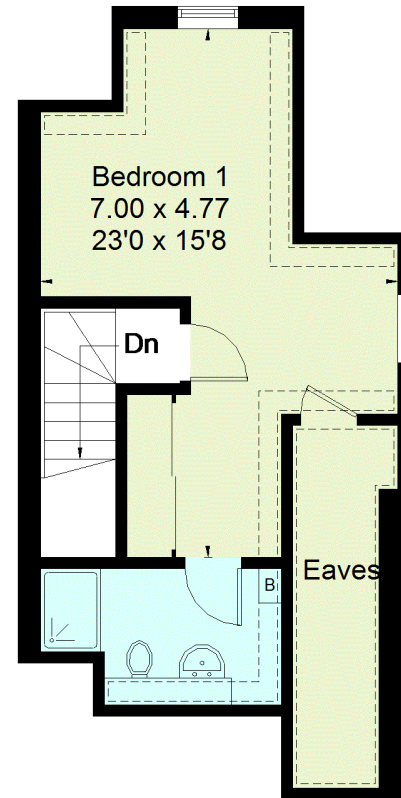
= Reduced headroom below 1.5m / 5'0



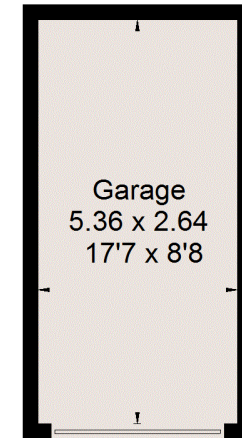
Ground Floor



First Floor



Second Floor



(Not Shown In Actual
Location / Orientation)

FLOORPLANZ © 2018 0203 9056099 Ref: 221964

This plan is for layout guidance only. Drawn in accordance with RICS guidelines. Not drawn to scale unless stated. Windows & door openings are approximate. Whilst every care is taken in the preparation of this plan, please check all dimensions, shapes & compass bearings before making any decisions reliant upon them.