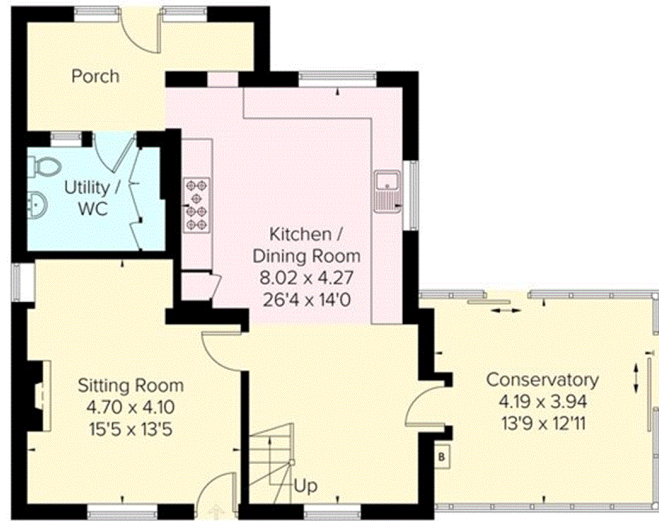
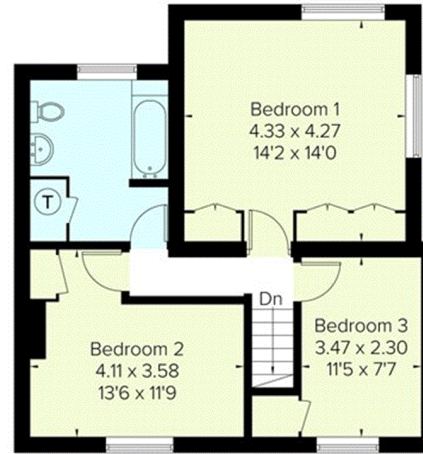


Forge Cottage, Rusper Road Newdigate, Dorking

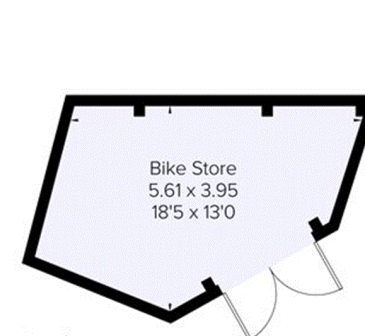
Approximate Gross Internal Area = 137.3 sq m / 1478 sq ft
Outbuildings = 72.1 sq m / 776 sq ft
Total = 209.4 sq m / 2254 sq ft



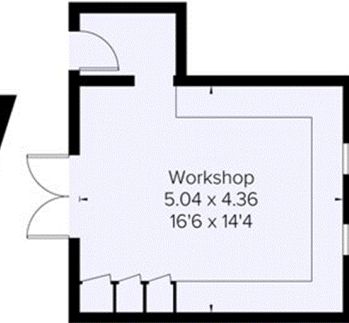
Ground Floor



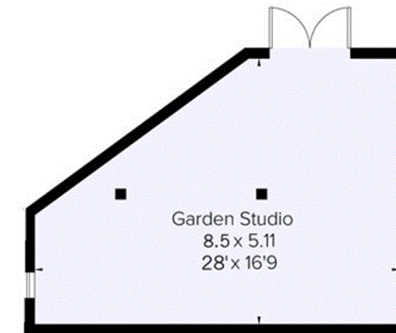
First Floor



(Not Shown In Actual Location / Orientation)



(Not Shown In Actual Location / Orientation)



Outbuildings

(Not Shown In Actual Location / Orientation)

FLOORPLANZ © 2018 0203 9056099 Ref: 221162

This plan is for layout guidance only. Drawn in accordance with RICS guidelines. Not drawn to scale unless stated. Windows & door openings are approximate. Whilst every care is taken in the preparation of this plan, please check all dimensions, shapes & compass bearings before making any decisions reliant upon them.