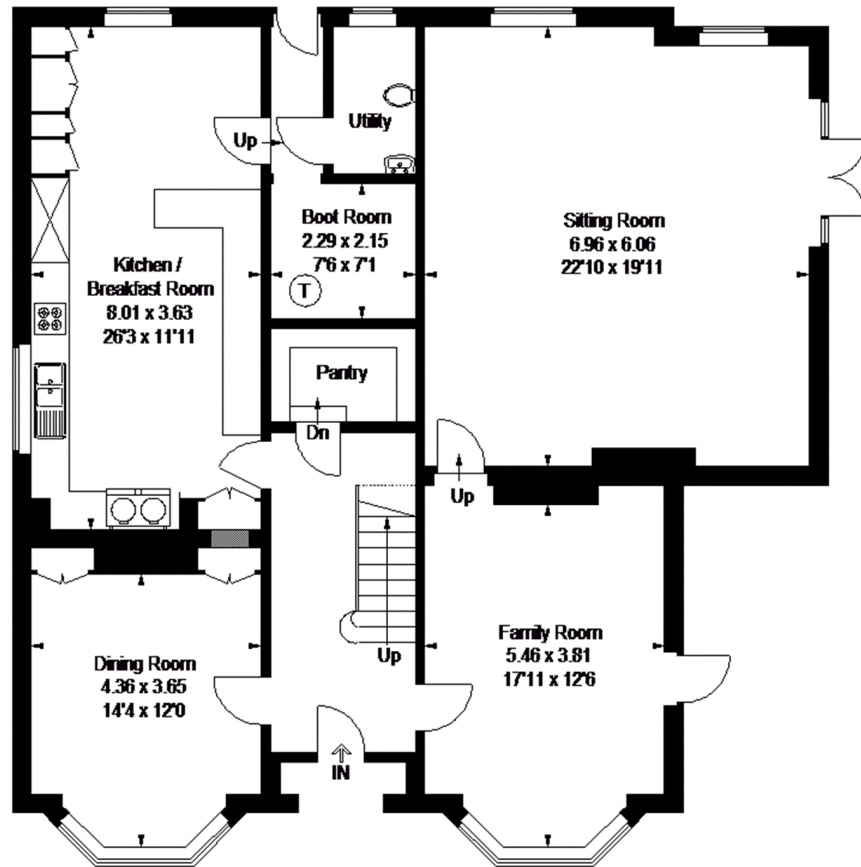


Newdigate Road, Beare Green, Dorking

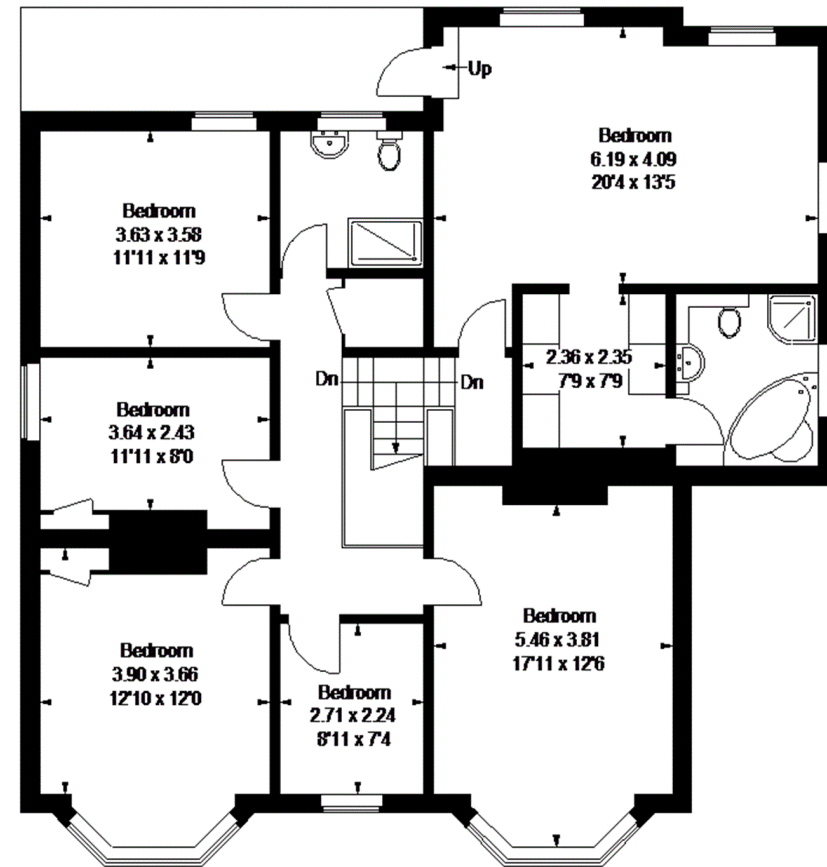


Approximate Gross Internal Area
271 sq m / 2918 sq ft

= Reduced headroom below 1.5 m / 5'0"



Ground Floor



First Floor

FLOORPLANZ © 2014 0845 6344080 Ref 121606

This plan is for layout guidance only. Drawn in accordance with RICS guidelines. Not drawn to scale unless stated. Windows & door openings are approximate. Whilst every care is taken in the preparation of this plan, please check all dimensions, shapes & compass bearings before making any decisions reliant upon them.