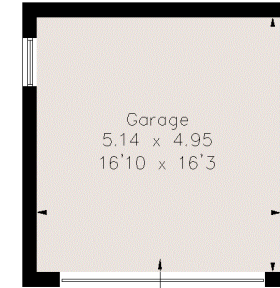
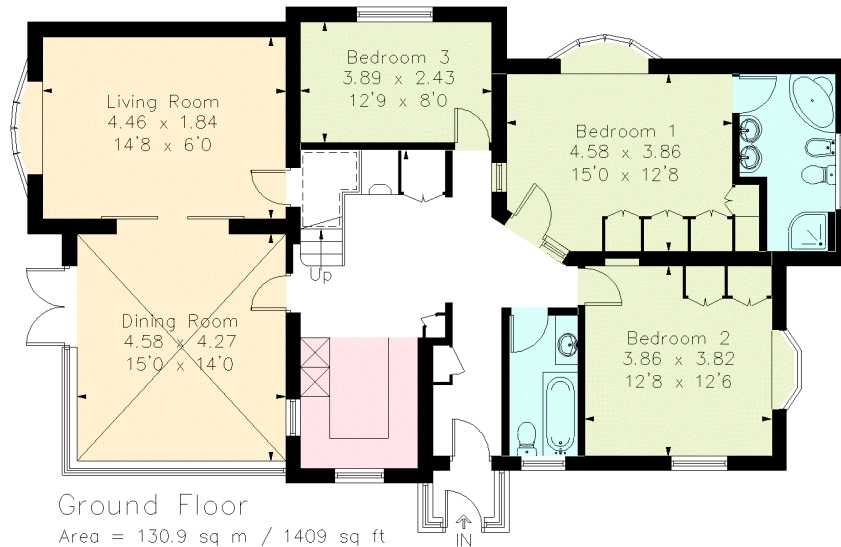


Approximate Area = 189.9 sq m / 2044 sq ft
 Including Limited Use Area (39.0 sq m / 419 sq ft) (Including Eaves)
 Garage = 25.5 sq m / 274 sq ft
 Total = 215.4 sq m / 2318 sq ft

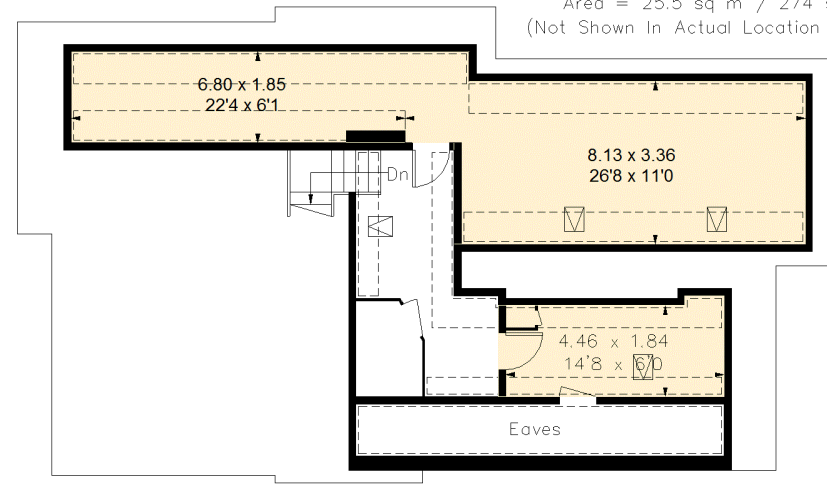


Garage
 Area = 25.5 sq m / 274 sq ft
 (Not Shown In Actual Location / Or

= Reduced head height below 1.5m



Ground Floor
 Area = 130.9 sq m / 1409 sq ft
 (Limited Use Area = 4.9 sq m / 52 sq ft)



First Floor
 Area = 59.0 sq m / 635 sq ft
 (Limited Use Area = 34.1 sq m / 367 sq ft)
 (Including Eaves)