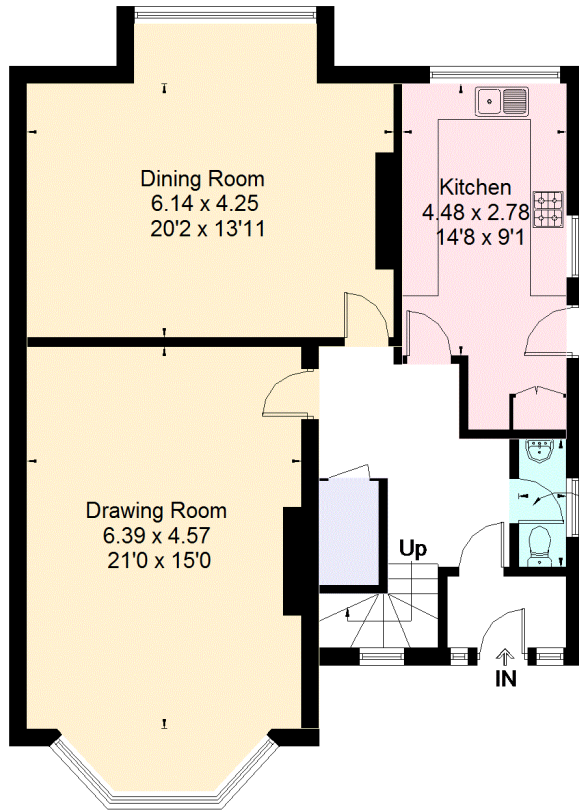


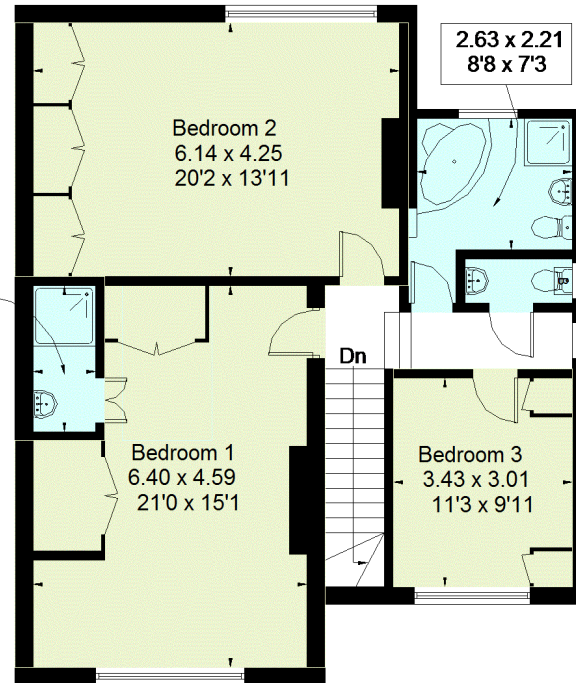
Approximate Floor Area = 184.9 sq m / 1990 sq ft  
Garage = 21.2 sq m / 228 sq ft  
Total = 206.1 sq m / 2218 sq ft



Ground Floor

2.47 x 1.05  
8'1 x 3'5

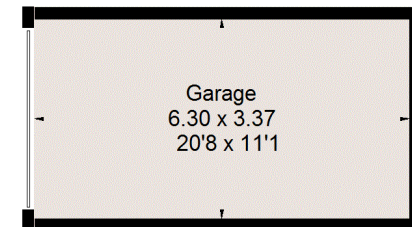
2.28 x 0.90  
7'6 x 2'11



First Floor

2.63 x 2.21  
8'8 x 7'3

= Reduced head height below 1.5m



(Not Shown In Actual Location / Orientation)