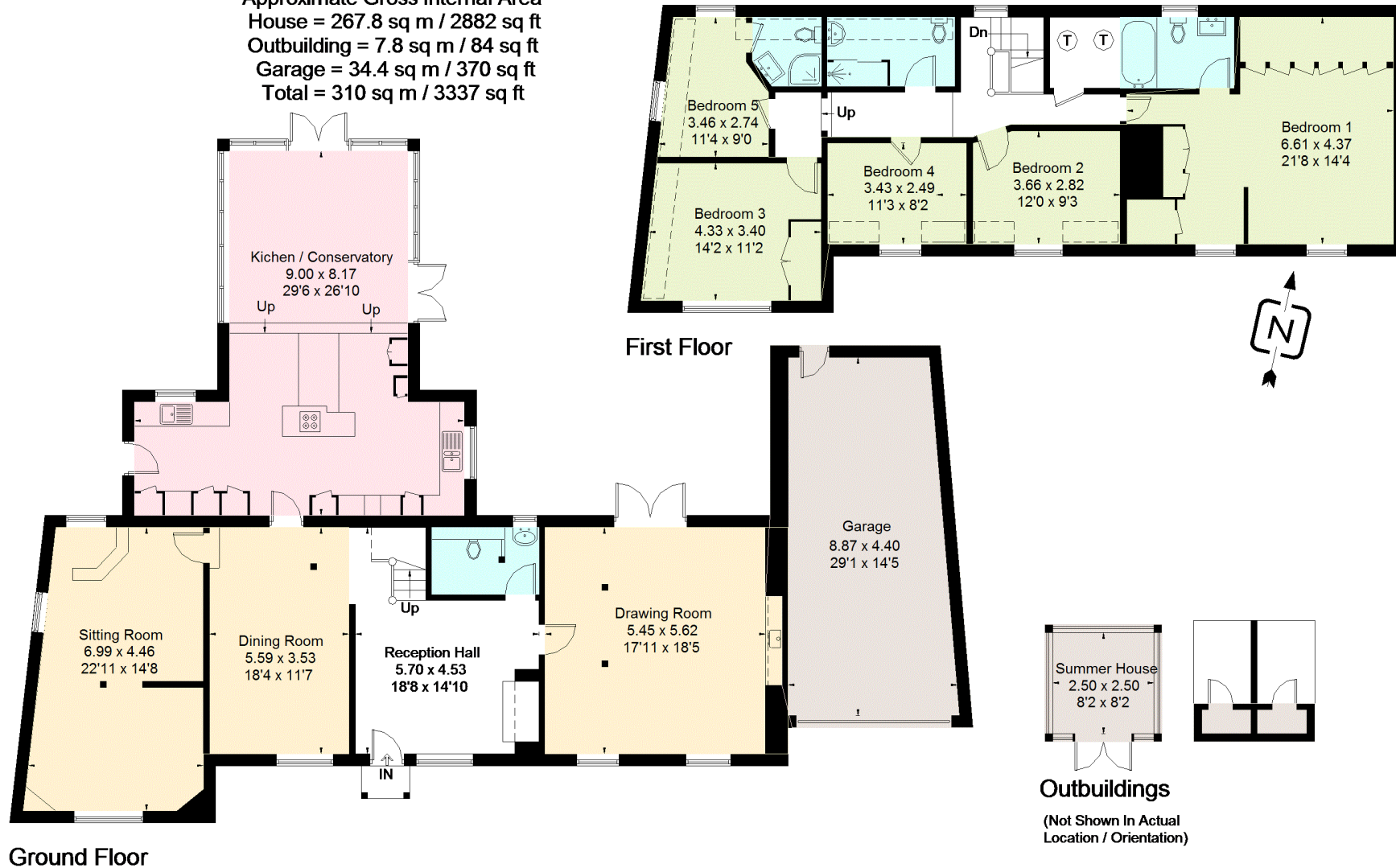


Churchend, Twyning, Tewkesbury

Approximate Gross Internal Area
 House = 267.8 sq m / 2882 sq ft
 Outbuilding = 7.8 sq m / 84 sq ft
 Garage = 34.4 sq m / 370 sq ft
 Total = 310 sq m / 3337 sq ft



FLOORPLANZ © 2015 0845 6344080 Ref: 143921

This plan is for layout guidance only. Drawn in accordance with RICS guidelines. Not drawn to scale unless stated. Windows & door openings are approximate. Whilst every care is taken in the preparation of this plan, please check all dimensions, shapes & compass bearings before making any decisions reliant upon them.