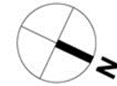
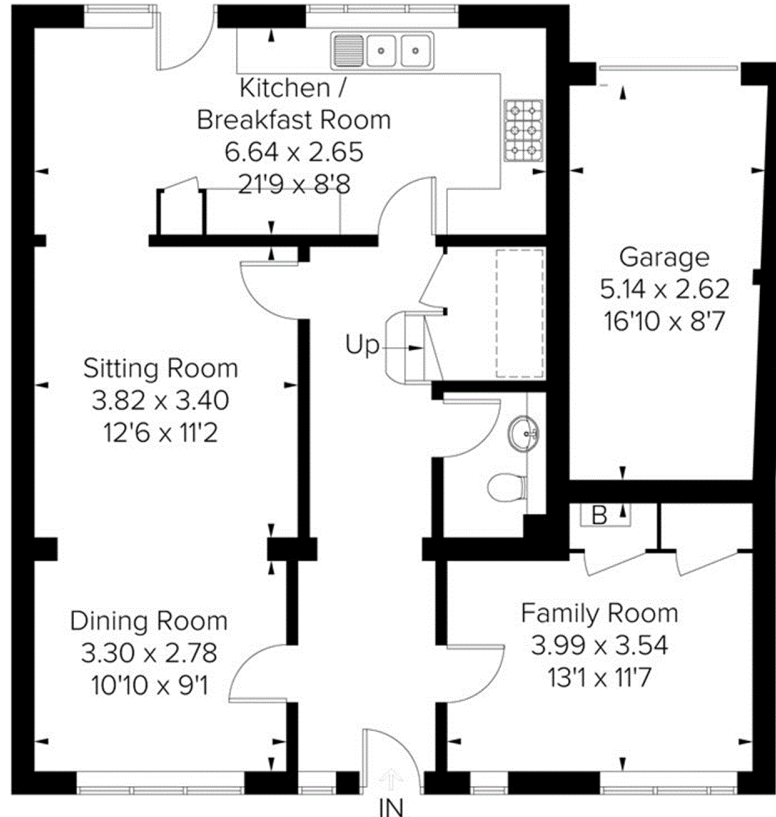


Approximate Area = 131.5 sq m / 1415 sq ft
 Including Limited Use Area (2.8 sq m / 29 sq ft)
 Garage = 12.8 sq m / 138 sq ft
 Total = 144.3 sq m / 1553 sq ft

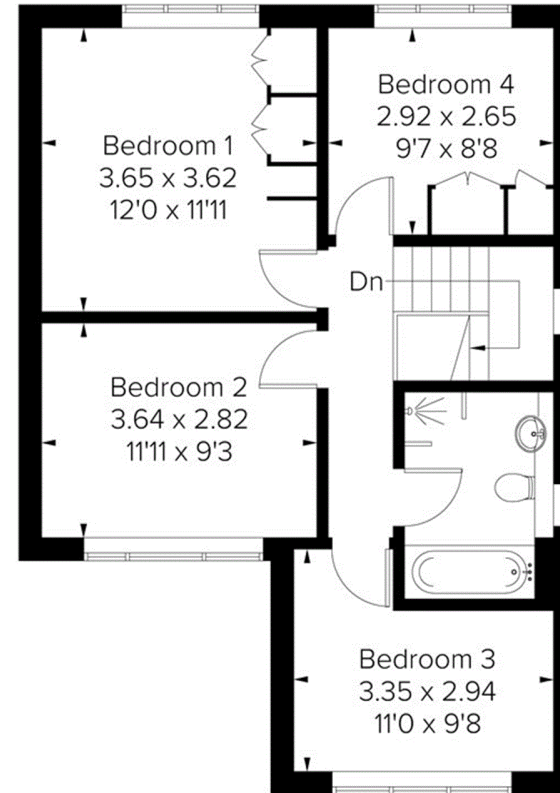


= Reduced head height below 1.5m



Ground Floor

Area = 75.4 sq m / 811 sq ft
 (Limited Use Area = 1.8 sq m / 19 sq ft)
 Garage = 12.8 sq m / 138 sq ft



First Floor

Area = 56.1 sq m / 604 sq ft
 (Limited Use Area = 1.0 sq m / 10 sq ft)

Surveyed and drawn in accordance with the International Property Measurement Standards (IPMS 2: Residential)