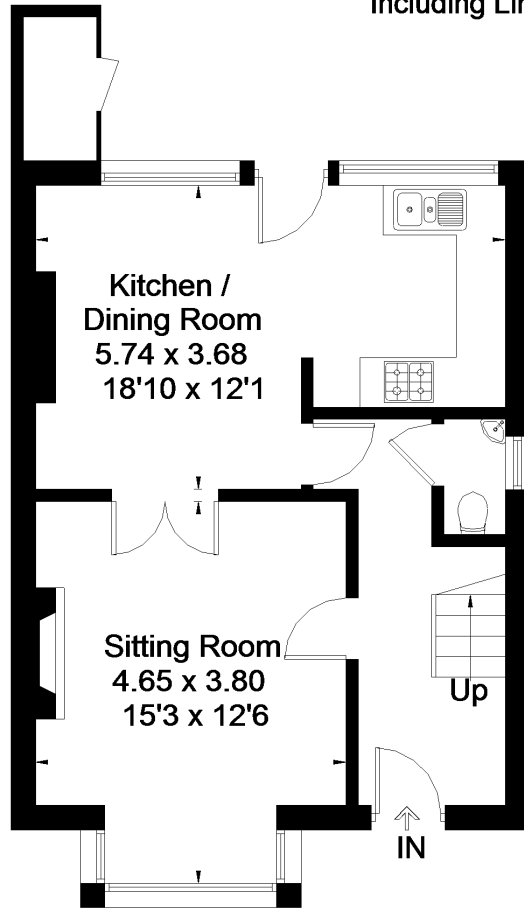


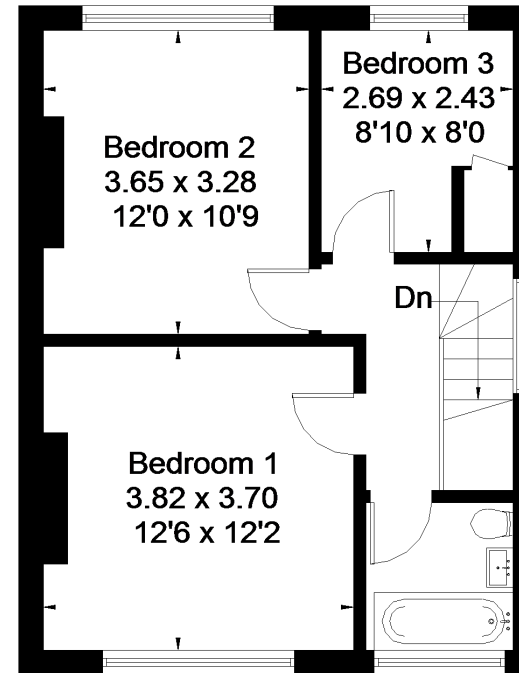


Approximate Area = 89.8 sq m / 967 sq ft
Store = 1.6 sq m / 17 sq ft
Total = 91.4 sq m / 984 sq ft
Including Limited Use Area (0.8 sq m / 8 sq ft)



Ground Floor

Area = 46.3 sq m / 498 sq ft
(Limited Use Area = 0.7 sq m / 7 sq ft)



First Floor

Area = 43.5 sq m / 468 sq ft
(Limited Use Area = 0.1 sq m / 1 sq ft)