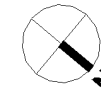
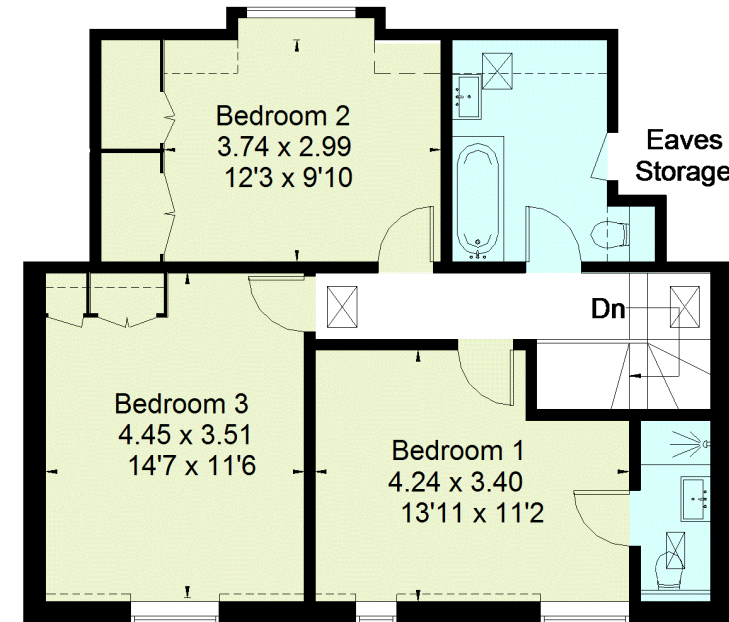
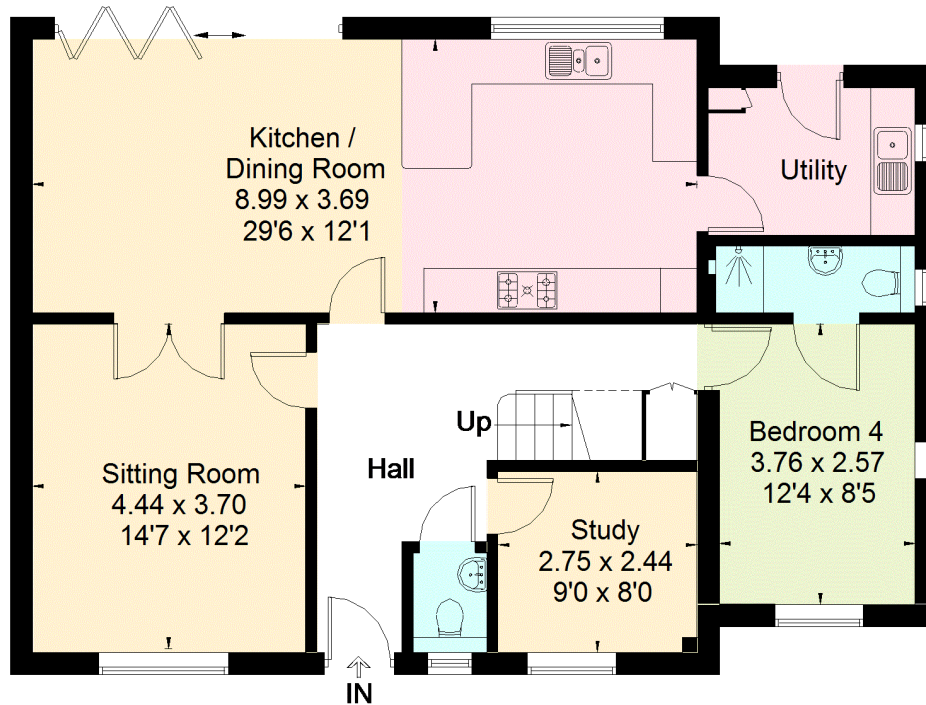


Approximate Area = 160.6 sq m / 1728 sq ft
Including Limited Use Area (6 sq m / 65 sq ft)



= Reduced head height below 1.5m



Ground Floor

Area = 97.1 sq m / 1045 sq ft
(Limited Use Area = 2.1 sq m / 23 sq ft)

First Floor

Area = 63.5 sq m / 683 sq ft
(Limited Use Area = 3.9 sq m / 42 sq ft)