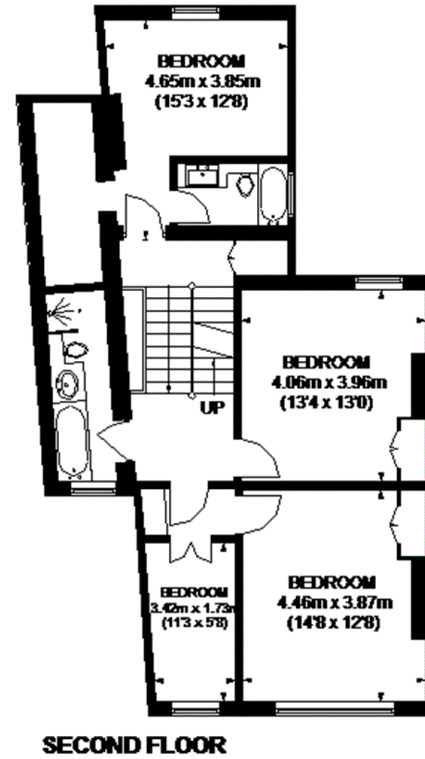
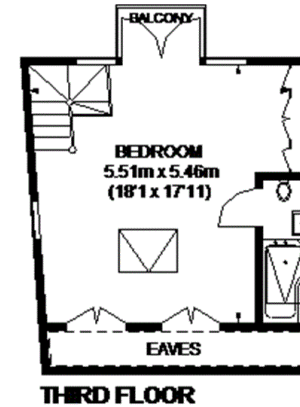
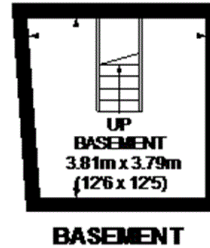
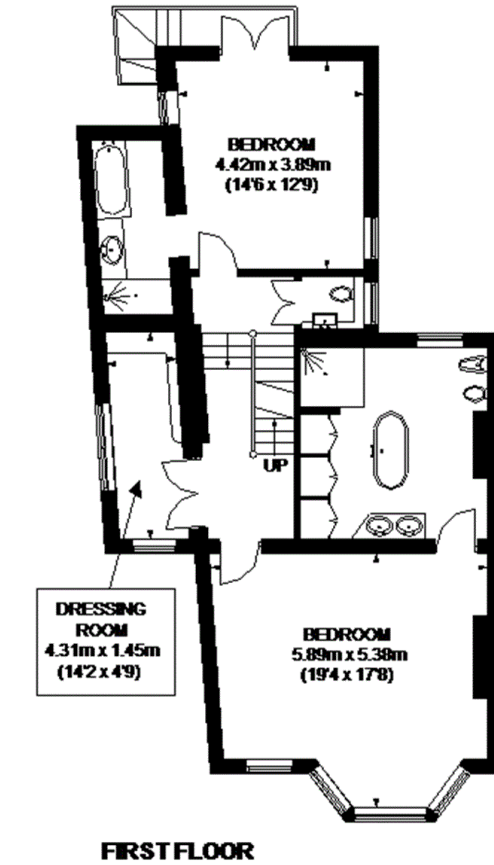
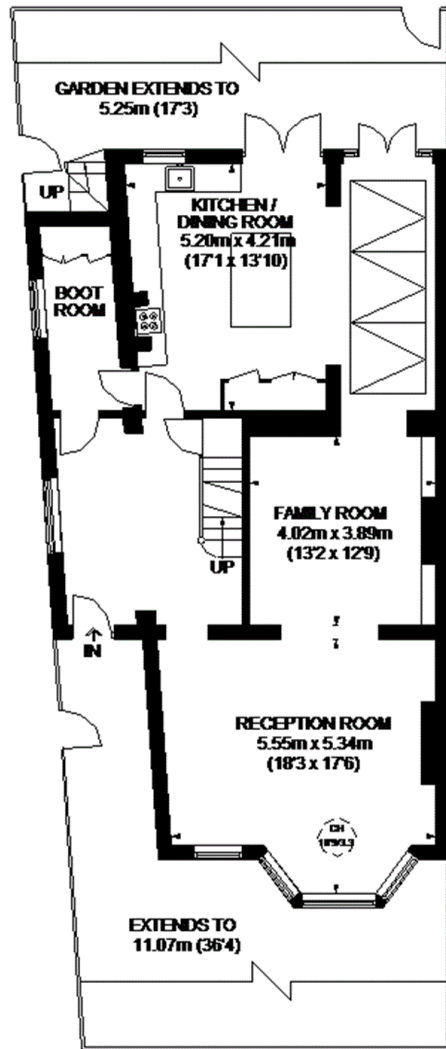
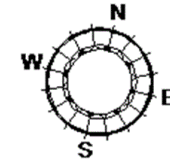


CLAPHAM COMMON NORTH SIDE



APPROXIMATE GROSS INTERNAL AREA
(EXCLUDING REDUCED HEADROOM / EAVES)

BASEMENT = 148 SQ. FT. (13.8 SQ. M.)

GROUND FLOOR = 1141 SQ. FT. (106 SQ. M.)

FIRST FLOOR = 990 SQ. FT. (92 SQ. M.)

SECOND FLOOR = 933 SQ. FT. (86.7 SQ. M.)

THIRD FLOOR = 343 SQ. FT. (31.9 SQ. M.)

REDUCED HEADROOM / EAVES

47 SQ. FT. (4.4 SQ. M.)

TOTAL = 3602 SQ. FT. (334.8 SQ. M.)

- = CEILING HEIGHT
- = SKYLIGHT / ROOF WINDOW
- = REDUCED HEADROOM BELOW 1.5M / 5'0

This plan is for layout guidance only. Not drawn to scale unless stated. Windows and door openings are approximate. Whilst every care is taken in the preparation of this plan, please check all dimensions, shapes and compass bearings before making any decisions reliant upon them. Please be advised that Countrywide / our agents have not seen or reviewed any building regulations or planning permission in relation to works carried out to the property (ID543659)