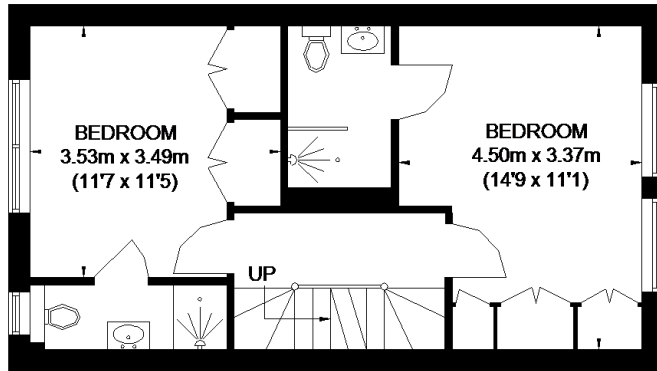
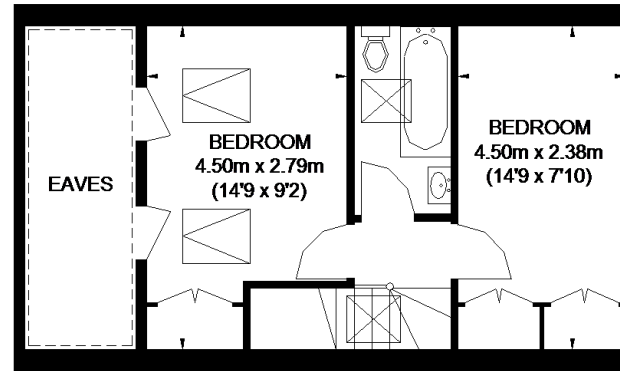


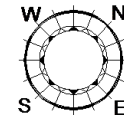
WYCLIFFE ROAD



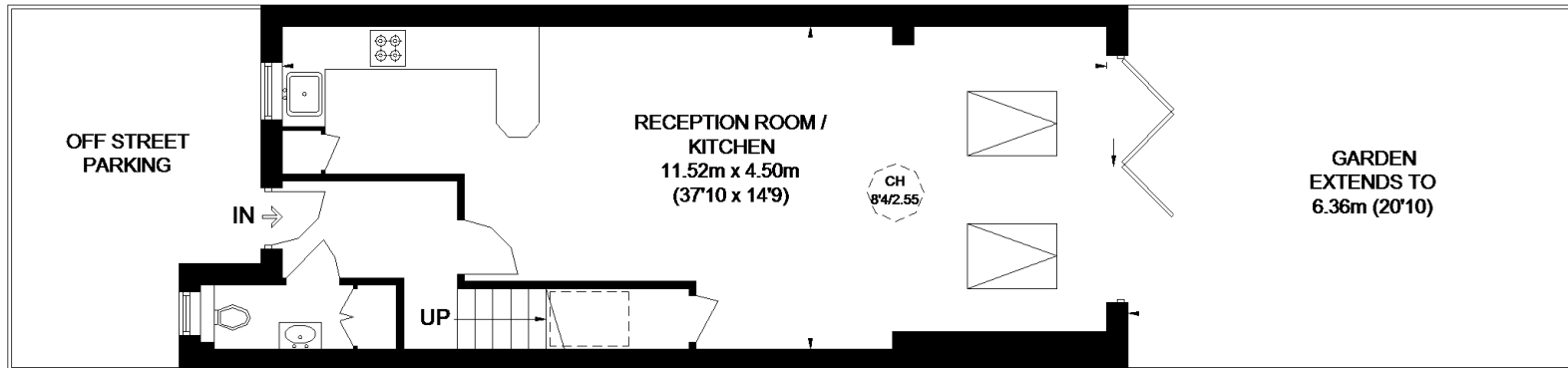
FIRST FLOOR



SECOND FLOOR



APPROXIMATE GROSS INTERNAL AREA
 (EXCLUDING REDUCED HEADROOM / EAVES)
 GROUND FLOOR = 567 SQ. FT. (52.7 SQ. M.)
 FIRST FLOOR = 414 SQ. FT. (38.5 SQ. M.)
 SECOND FLOOR = 332 SQ. FT. (30.8 SQ. M.)
 REDUCED HEADROOM / EAVES
 85 SQ. FT. (7.9 SQ. M.)
 TOTAL = 1398 SQ. FT. (129.9 SQ. M.)



GROUND FLOOR

- = CEILING HEIGHT
- = SKYLIGHT / ROOF WINDOW
- = REDUCED HEADROOM BELOW 1.5M / 5'0

This plan is for layout guidance only. Not drawn to scale unless stated. Windows and door openings are approximate. Whilst every care is taken in the preparation of this plan, please check all dimensions, shapes and compass bearings before making any decisions reliant upon them. Please be advised that Countrywide / our agents have not seen or reviewed any building regulations or planning permission in relation to works carried out to the property (ID545345)