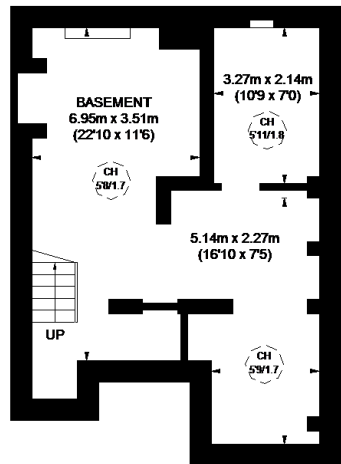
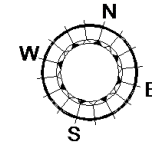
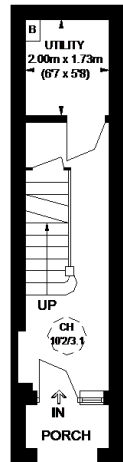


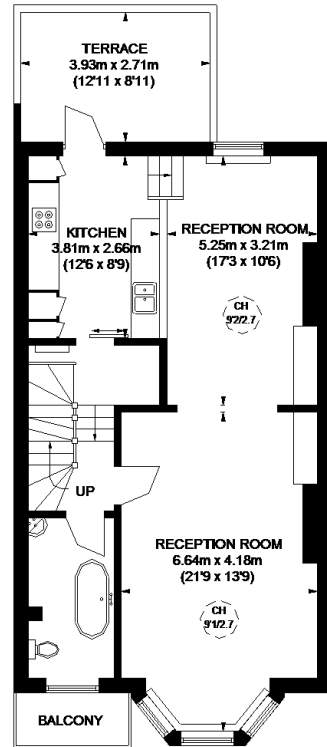
CLAPHAM COMMON NORTHSIDE



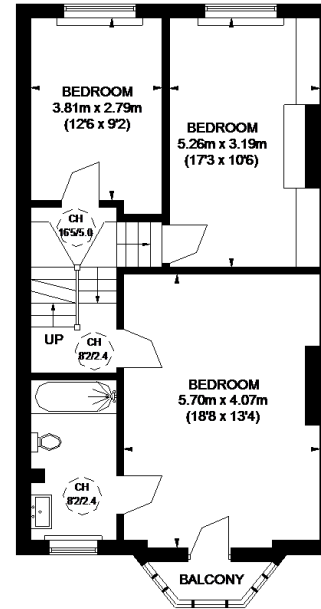
BASEMENT



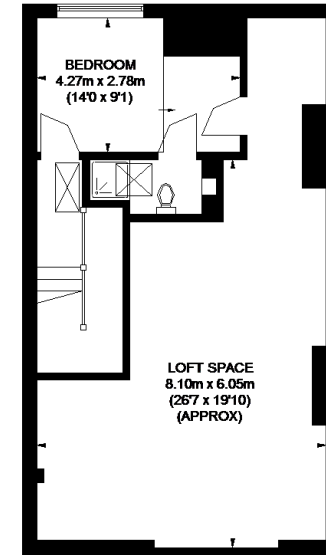
GROUND FLOOR



FIRST FLOOR



SECOND FLOOR



THIRD FLOOR

APPROXIMATE GROSS INTERNAL AREA
 BASEMENT = 503 SQ. FT. (46.7 SQ. M.)
 GROUND FLOOR = 148 SQ. FT. (13.8 SQ. M.)
 FIRST FLOOR = 738 SQ. FT. (68.6 SQ. M.)
 SECOND FLOOR = 716 SQ. FT. (66.5 SQ. M.)
 THIRD FLOOR (EXCLUDING LOFT SPACE)
 199 SQ. FT. (18.5 SQ. M.)
 LOFT SPACE = 450 SQ. FT. (41.8 SQ. M.)
TOTAL = 2754 SQ. FT. (255.9 SQ. M.)

= CEILING HEIGHT

= SKYLIGHT / ROOF WINDOW

This plan is for layout guidance only. Not drawn to scale unless stated. Windows and door openings are approximate. Whilst every care is taken in the preparation of this plan, please check all dimensions, shapes and compass bearings before making any decisions reliant upon them. Please be advised that Countrywide / our agents have not seen or reviewed any building regulations or planning permission in relation to works carried out to the property (ID428320)