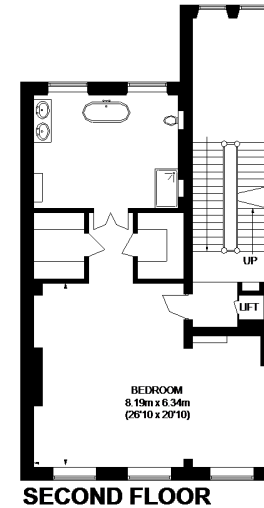
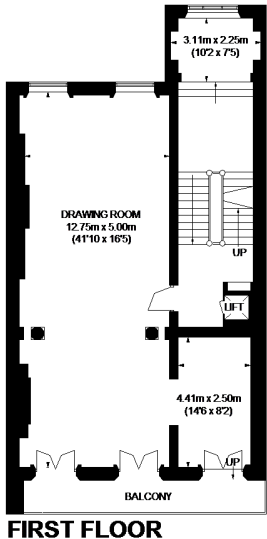
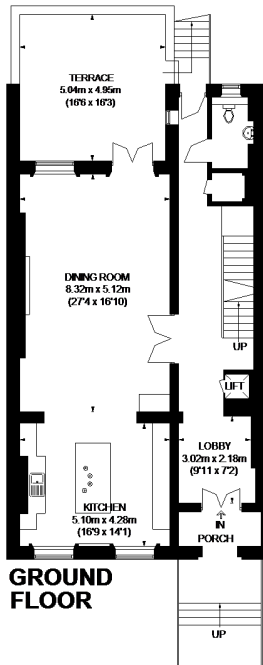
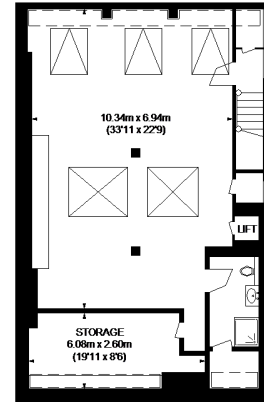
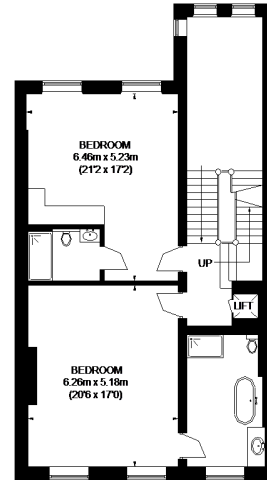
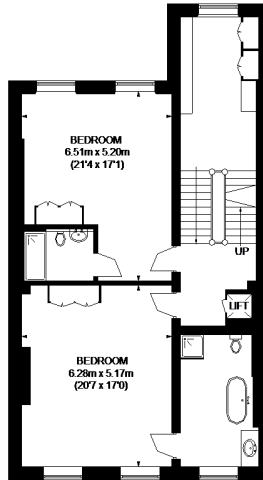
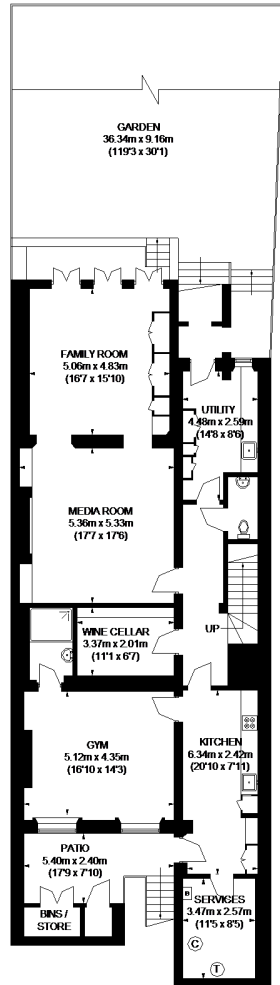
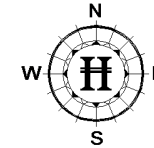


CLAPHAM COMMON NORTH SIDE



APPROXIMATE GROSS INTERNAL AREA
(EXCLUDING REDUCED HEADROOM / STORAGE)

- LOWER GROUND FLOOR = 1676 SQ. FT. (155.7 SQ. M.)
- GROUND FLOOR = 1162 SQ. FT. (108 SQ. M.)
- FIRST FLOOR = 1204 SQ. FT. (111.9 SQ. M.)
- SECOND FLOOR = 1225 SQ. FT. (113.8 SQ. M.)
- THIRD FLOOR = 1199 SQ. FT. (111.4 SQ. M.)
- FOURTH FLOOR = 1202 SQ. FT. (111.7 SQ. M.)
- FIFTH FLOOR = 1068 SQ. FT. (99.2 SQ. M.)
- BINS / STORE = 32 SQ. FT. (3 SQ. M.)
- REDUCED HEADROOM / STORAGE = 75 SQ. FT. (7 SQ. M.)
- TOTAL = 8843 SQ. FT. (821.7 SQ. M.)

This plan is for layout guidance only. Not drawn to scale unless stated. Windows and door openings are approximate. Whilst every care is taken in the preparation of this plan, please check all dimensions, shapes and compass bearings before making any decisions reliant upon them. Please be advised that Hamptons International / our agents have not seen or reviewed any building regulations or planning permission in relation to works carried out to the property (ID320303)

 = SKYLIGHT / ROOF WINDOW

 = REDUCED HEADROOM BELOW 1.5M / 5'0"