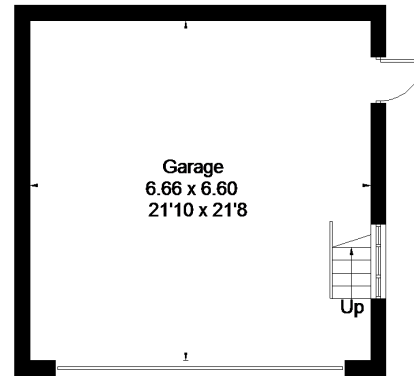
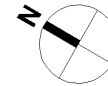
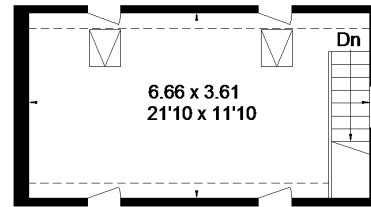


Approximate Area = 180.8 sq m / 1946 sq ft  
 Garage = 67.9 sq m / 731 sq ft  
 Total = 248.7 sq m / 2677 sq ft  
 Including Limited Use Area (3.7 sq m / 40 sq ft)

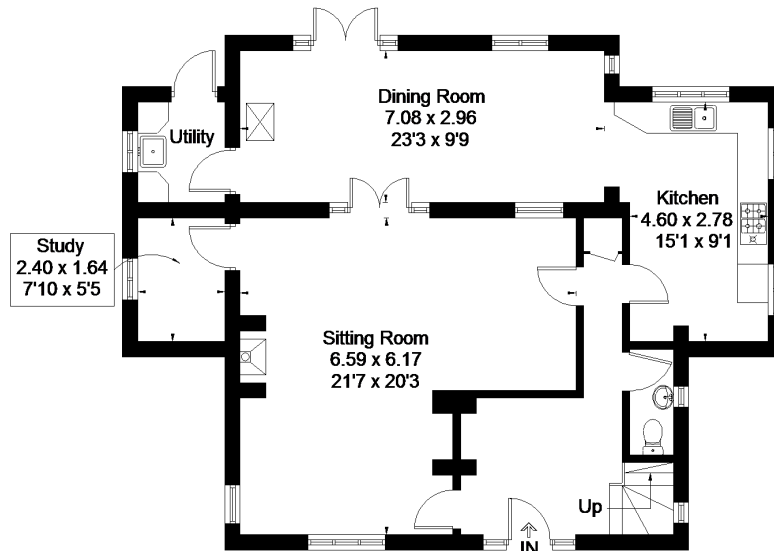


**Garage - Ground Floor**  
 (Not Shown In Actual  
 Location / Orientation)

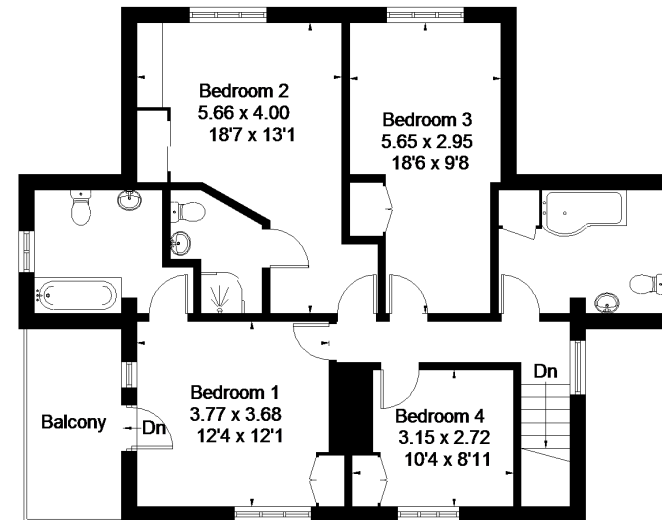


**Garage - First Floor**

= Reduced head height below 1.5m



**Ground Floor**



**First Floor**