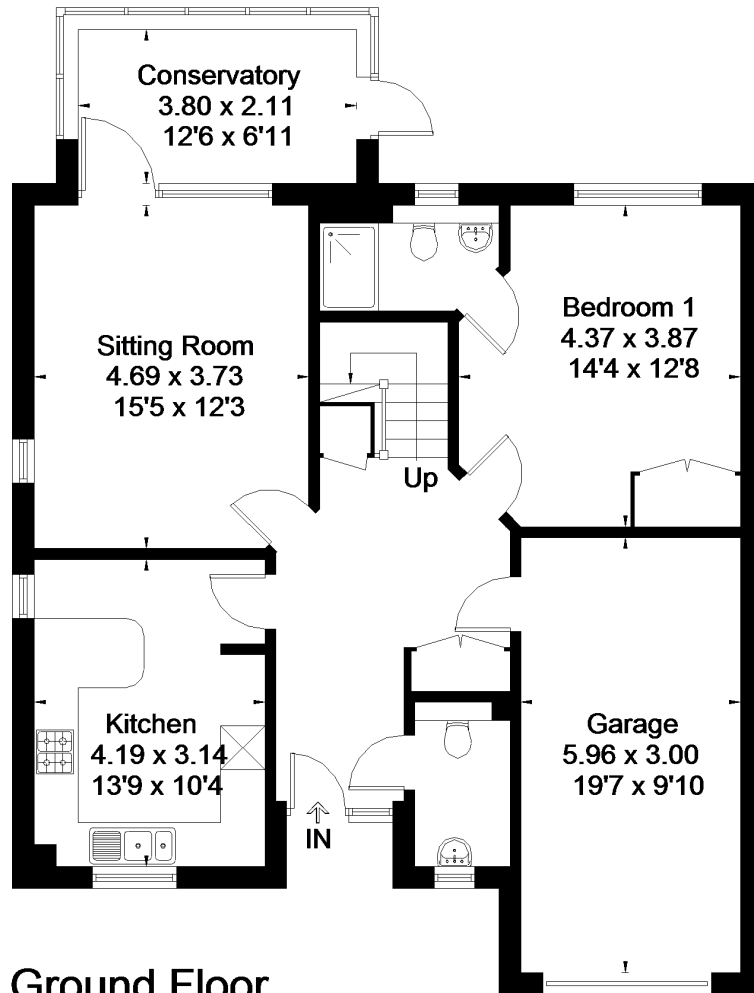
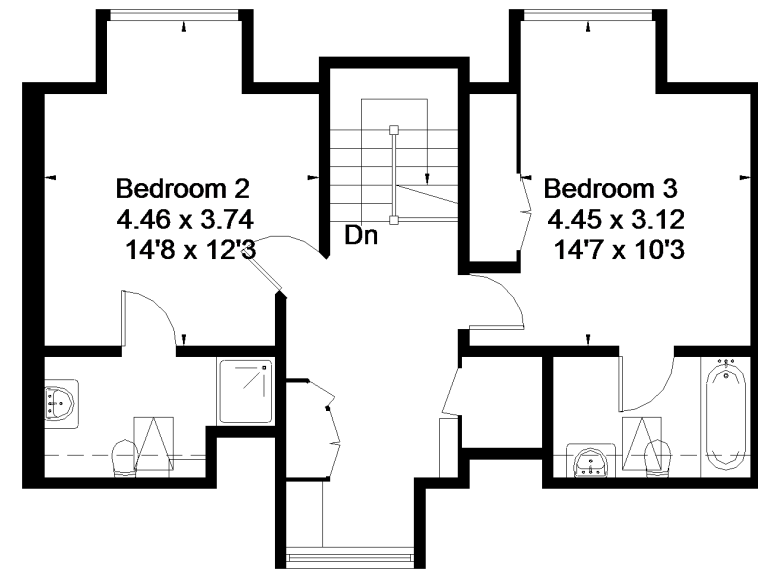


Approximate Area = 156.9 sq m / 1689 sq ft (Including Garage)
Including Limited Use Area (3.7 sq m / 40 sq ft)



Ground Floor

Area = 100.9 sq m / 1086 sq ft
(Limited Use Area = 1.6 sq m / 17 sq ft)



First Floor

Area = 56.0 sq m / 603 sq ft
(Limited Use Area = 2.1 sq m / 23 sq ft)