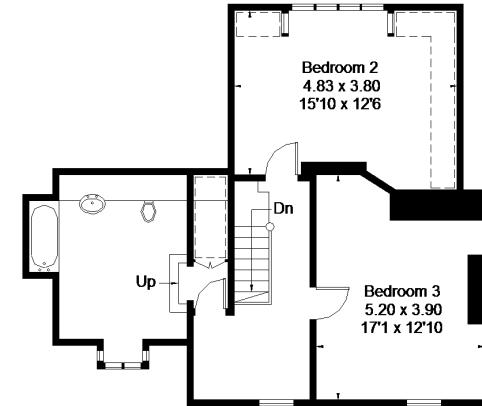


West Pallant, Chichester

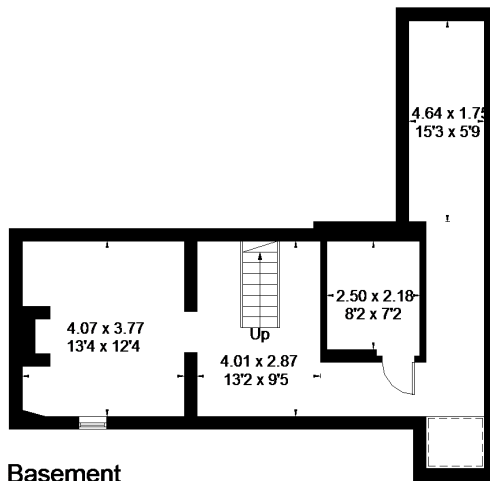
Approximate Gross Internal Area = 259.8 sq m / 2796 sq ft
 Basement = 53.9 sq m / 580 sq ft
 Total = 313.7 sq m / 3376 sq ft



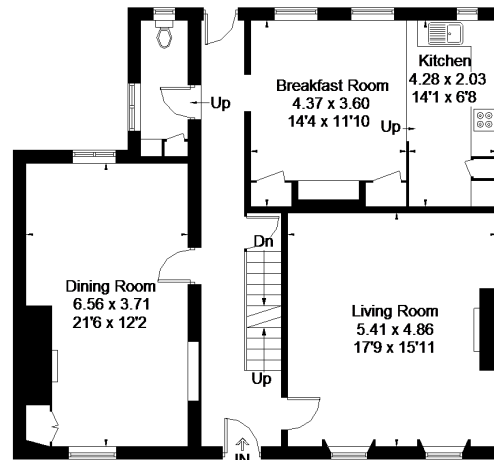
= Reduced headroom below 1.5m / 5'0"



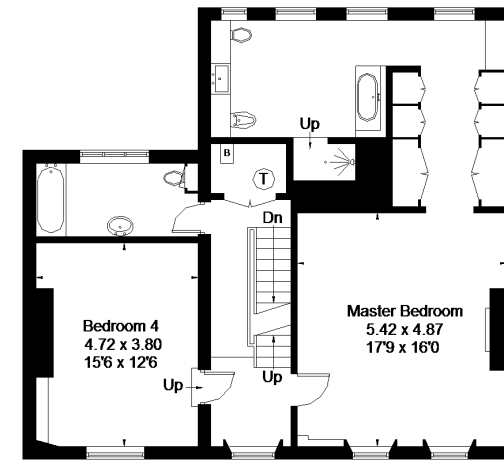
Second Floor



Basement



Ground Floor



First Floor

FLOORPLANZ © 2018 0203 9056099 Ref: 218598

This plan is for layout guidance only. Drawn in accordance with RICS guidelines. Not drawn to scale unless stated. Windows & door openings are approximate. Whilst every care is taken in the preparation of this plan, please check all dimensions, shapes & compass bearings before making any decisions reliant upon them.