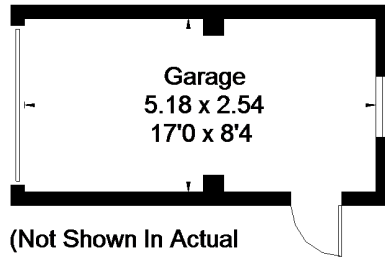
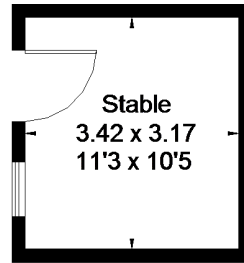


Selangor Avenue, Emsworth

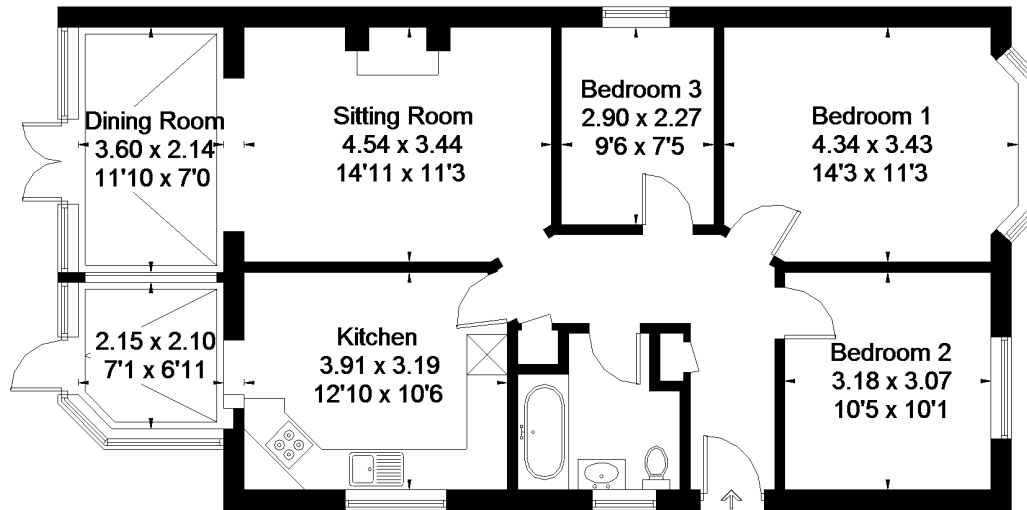
Approximate Gross Internal Area = 90.7 sq m / 976 sq ft
Garage = 13.3 sq m / 143 sq ft
Stables = 32 sq m / 344 sq ft
Total = 136 sq m / 1463 sq ft



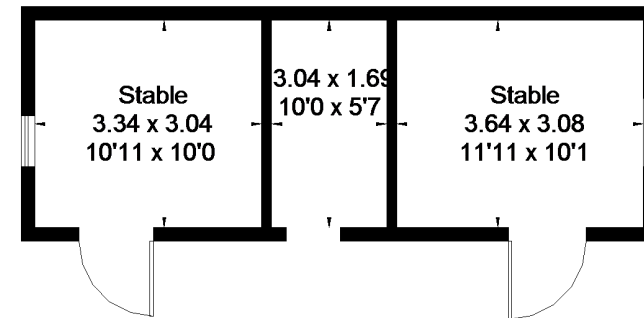
(Not Shown In Actual Location / Orientation)



(Not Shown In Actual Location / Orientation)



Ground Floor



(Not Shown In Actual Location / Orientation)

FLOORPLANZ © 2018 0203 9056099 Ref: 214053

This plan is for layout guidance only. Drawn in accordance with RICS guidelines. Not drawn to scale unless stated. Windows & door openings are approximate. Whilst every care is taken in the preparation of this plan, please check all dimensions, shapes & compass bearings before making any decisions reliant upon them.