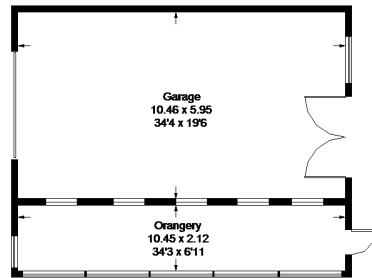
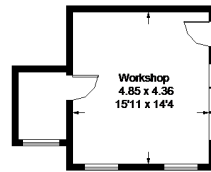


Runcton Lane, Runcton, Chichester

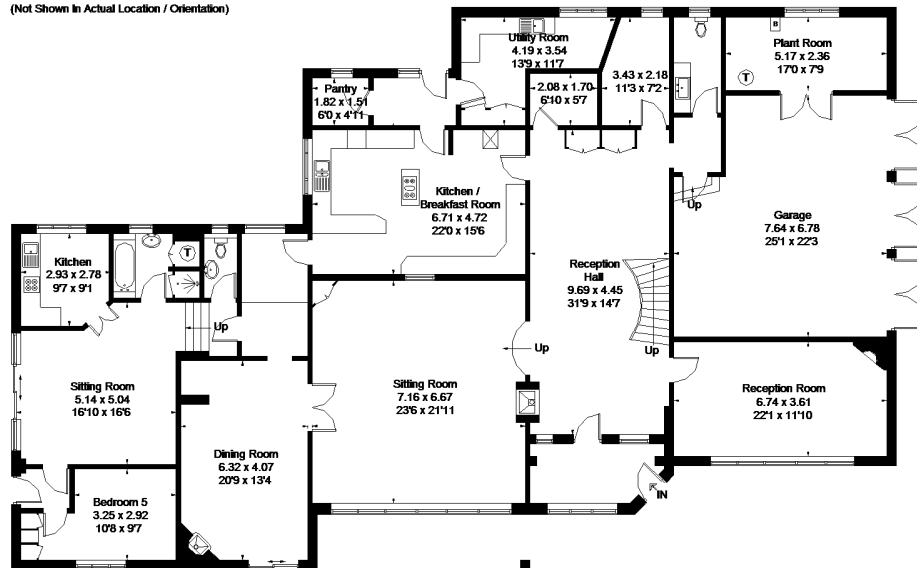
Approximate Gross Internal Area = 593.8 sq m / 6392 sq ft
(Including Garage / Excluding Void)
Outbuildings = 111.1 sq m / 1196 sq ft
Total = 704.9 sq m / 7588 sq ft



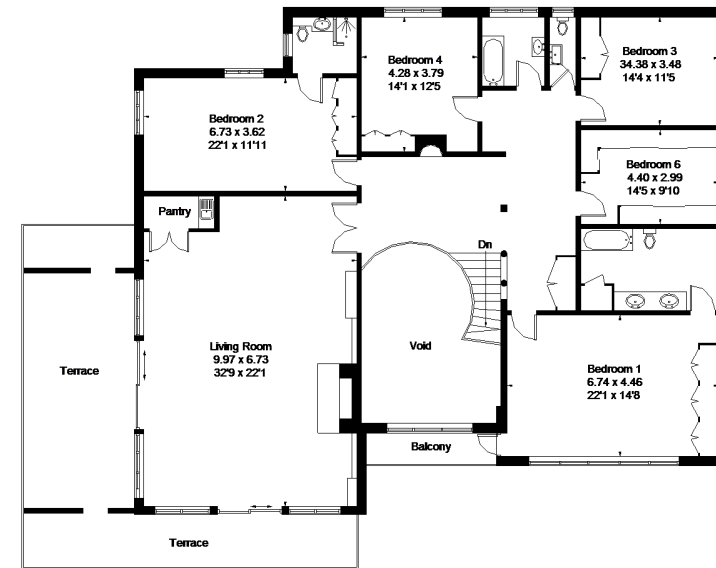
(Not Shown In Actual Location / Orientation)



(Not Shown In Actual Location / Orientation)



Ground Floor



First Floor

FLOORPLANZ © 2016 0845 6344080 Ref: 158843

This plan is for layout guidance only. Drawn in accordance with RICS guidelines. Not drawn to scale unless stated. Windows & door openings are approximate. Whilst every care is taken in the preparation of this plan, please check all dimensions, shapes & compass bearings before making any decisions reliant upon them.