

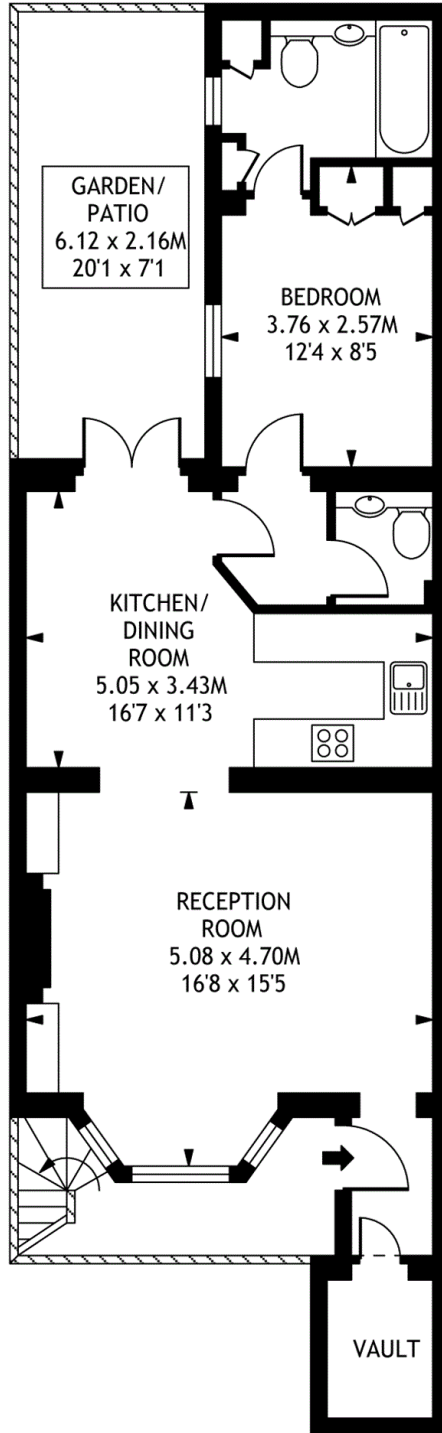
**Redesdale Street, SW3**

Approximate Internal floor (Living) area\*  
= 653 sq ft / 60.66 sq m

Approximate Additional Area\*  
= 0.0 sq ft / 0.00 sq m

Total Areas Shown on Plan  
653 sq ft / 60.66 sq m

(D & G Reference: X36368)  
(D & G Grid Ref: J8)



Lower Ground Floor

Illustration for identification purposes only, not to scale  
All measurements are maximum, and include wardrobes and window bays where applicable