

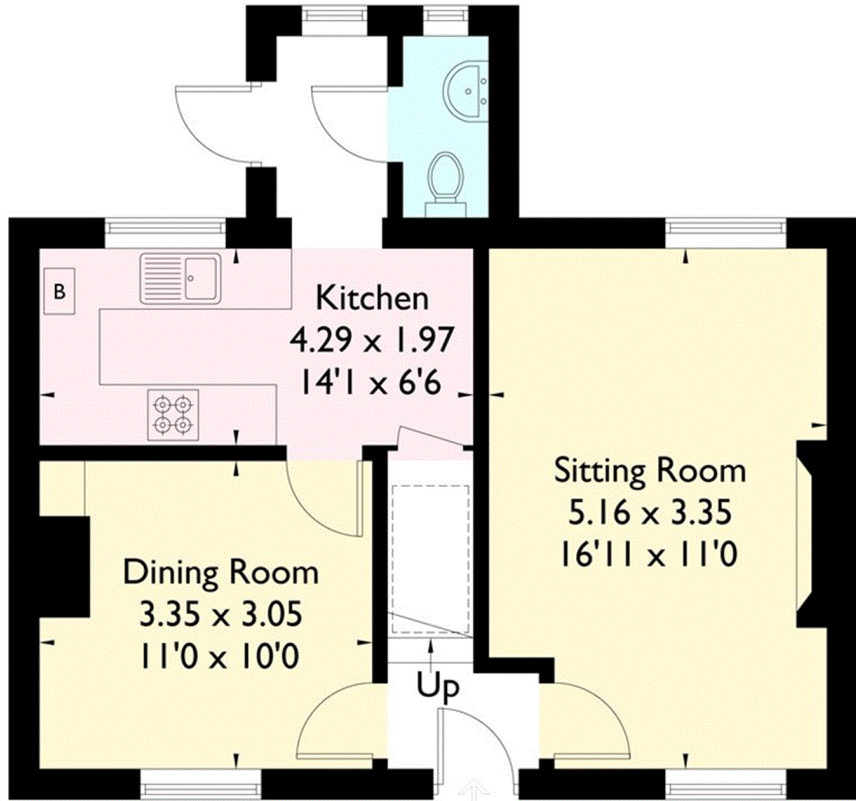
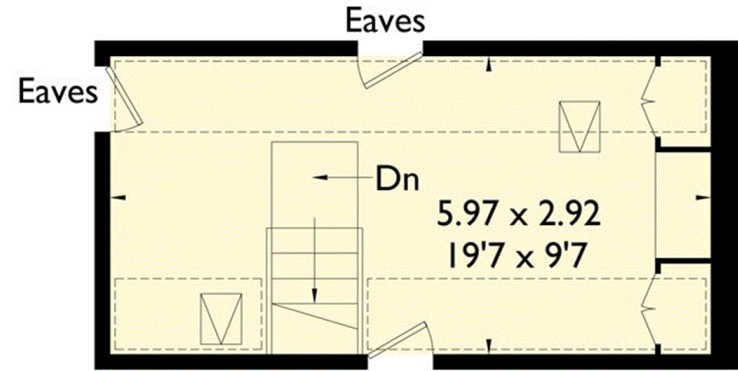
# Pollards Wood Road, Oxted

Approximate Gross Internal Area  
102.2 sq m / 1100 sq ft

Floorplan © 2018  
0203 9056099 Ref: 219297  
This plan is for layout guidance only.  
Drawn in accordance with RICS guidelines. Not drawn to scale, unless stated. Windows & door openings are approximate. Whilst every care is taken in the preparation of this plan, please check all dimensions, shapes & compass bearings before making any decisions reliant upon them.

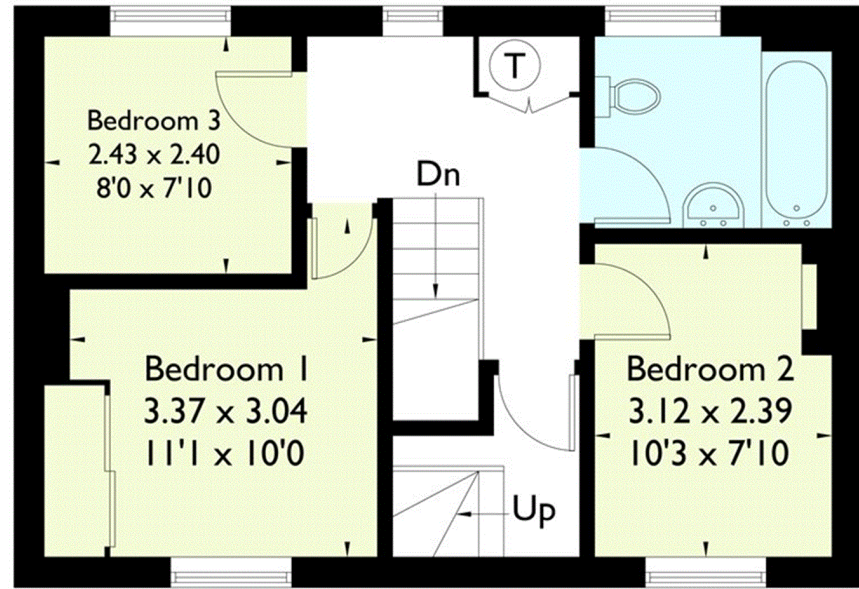


= Reduced headroom below 1.5m / 5'0



Ground Floor

## Second Floor



First Floor