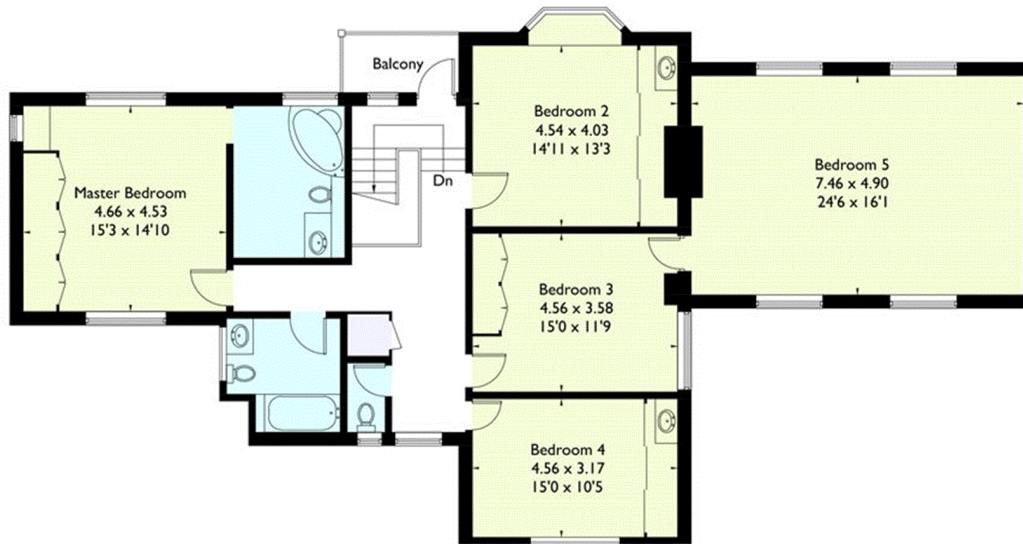
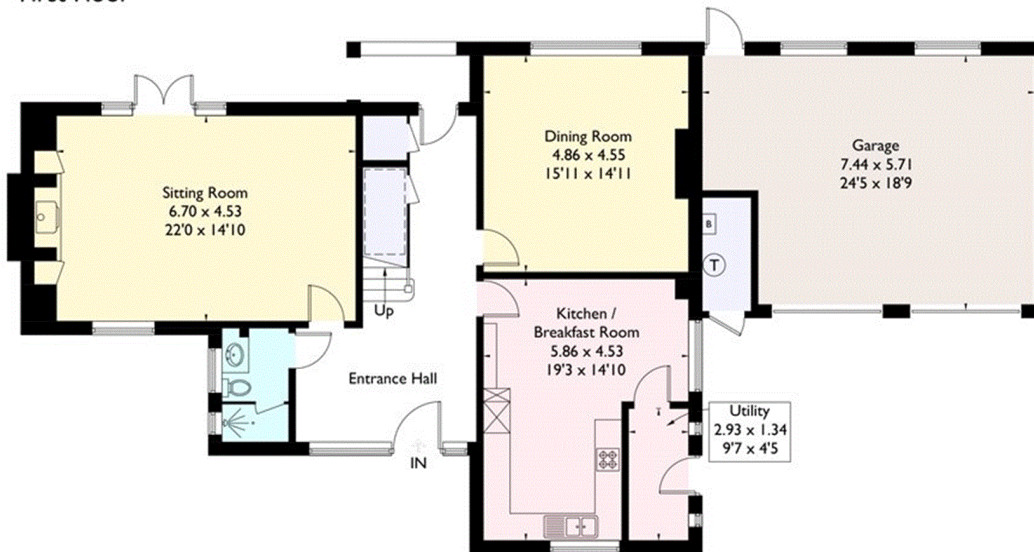


## Oaks Road, Croydon

Approximate Gross Internal Area  
 House = 261 sq m / 2809 sq ft  
 Garage = 41.8 sq m / 450 sq ft  
 Workshop = 7.5 sq m / 81 sq ft  
 Total = 310.3 sq m / 3340 sq ft



First Floor



Ground Floor



(Not Shown In Actual Location / Orientation)



FLOORPLANZ © 2018 0203 9056099 Ref: 212891

This plan is for layout guidance only. Drawn in accordance with RICS guidelines. Not drawn to scale unless stated. Windows & door openings are approximate. Whilst every care is taken in the preparation of this plan, please check all dimensions, shapes & compass bearings before making any decisions reliant upon them.