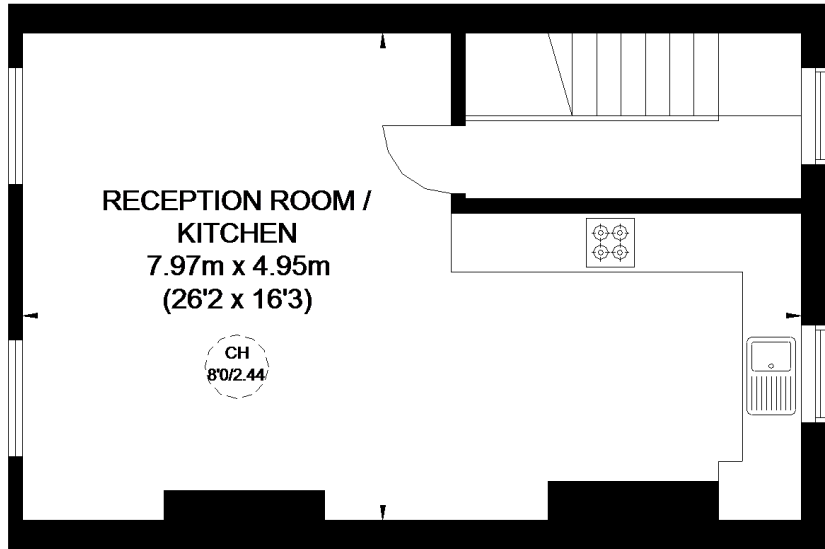
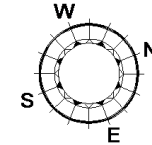


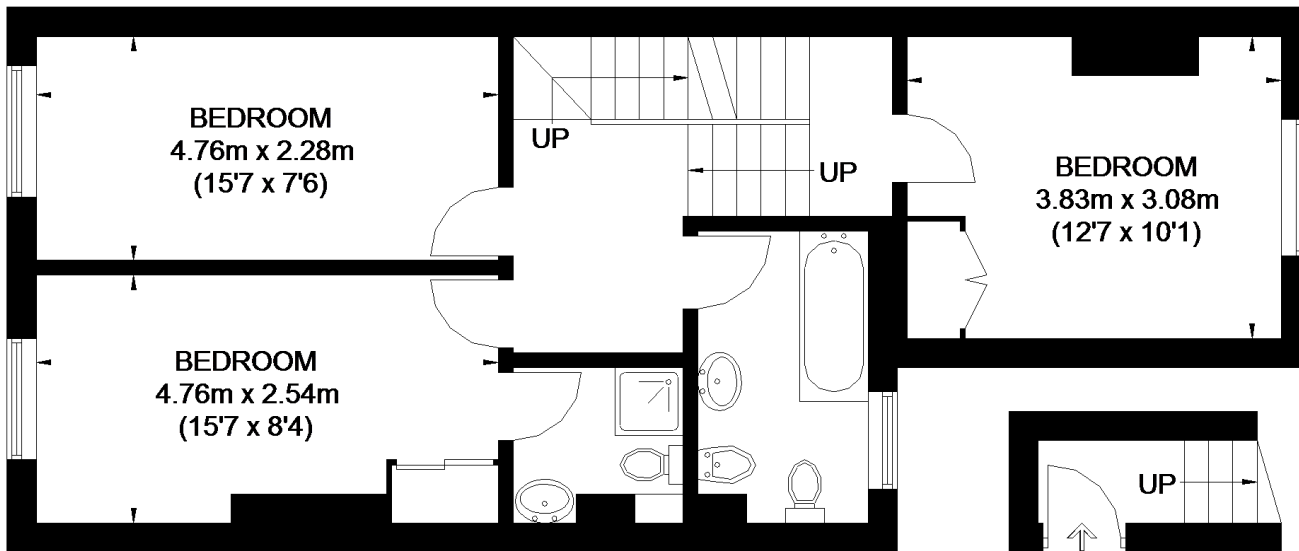
BOUTFLOWER ROAD



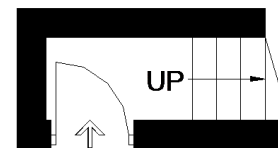
THIRD FLOOR



APPROXIMATE GROSS INTERNAL AREA
FIRST FLOOR = 23 SQ. FT. (2.1 SQ. M.)
SECOND FLOOR = 602 SQ. FT. (55.9 SQ. M.)
THIRD FLOOR = 430 SQ. FT. (40.0 SQ. M.)
TOTAL = 1055 SQ. FT. (98.0 SQ. M.)



SECOND FLOOR



FIRST FLOOR

= CEILING HEIGHT

This plan is for layout guidance only. Not drawn to scale unless stated. Windows and door openings are approximate. Whilst every care is taken in the preparation of this plan, please check all dimensions, shapes and compass bearings before making any decisions reliant upon them. Please be advised that Countrywide / our agents have not seen or reviewed any building regulations or planning permission in relation to works carried out to the property (ID539345)