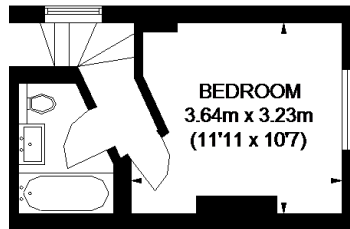
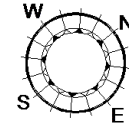
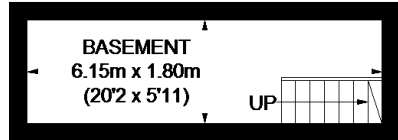


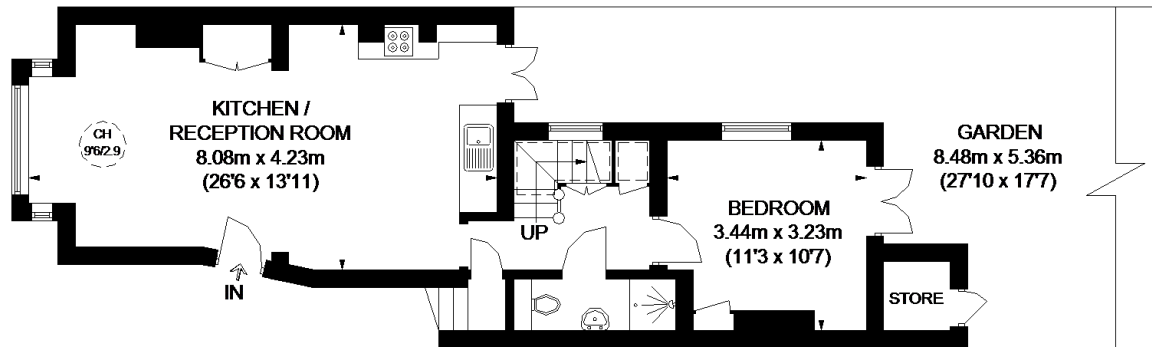
GAYVILLE ROAD



FIRST FLOOR



BASEMENT



GROUND FLOOR

**APPROXIMATE GROSS INTERNAL AREA
(EXCLUDING REDUCED HEADROOM)**
 GROUND FLOOR = 584 SQ. FT. (54.3 SQ. M.)
 FIRST FLOOR = 193 SQ. FT. (17.9 SQ. M.)
 BASEMENT = 119 SQ. FT. (11.1 SQ. M.)
 STORE = 16 SQ. FT. (1.5 SQ. M.)
 REDUCED HEADROOM
 15 SQ. FT. (1.4 SQ. M.)
TOTAL = 927 SQ. FT. (86.2 SQ. M.)



This plan is for layout guidance only. Not drawn to scale unless stated. Windows and door openings are approximate. Whilst every care is taken in the preparation of this plan, please check all dimensions, shapes and compass bearings before making any decisions reliant upon them. Please be advised that Countrywide / our agents have not seen or reviewed any building regulations or planning permission in relation to works carried out to the property (ID431499)