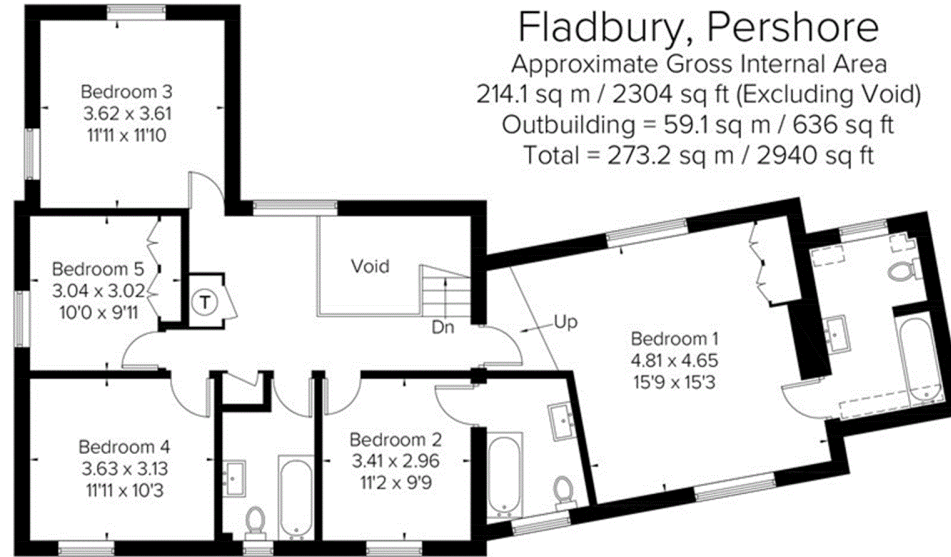
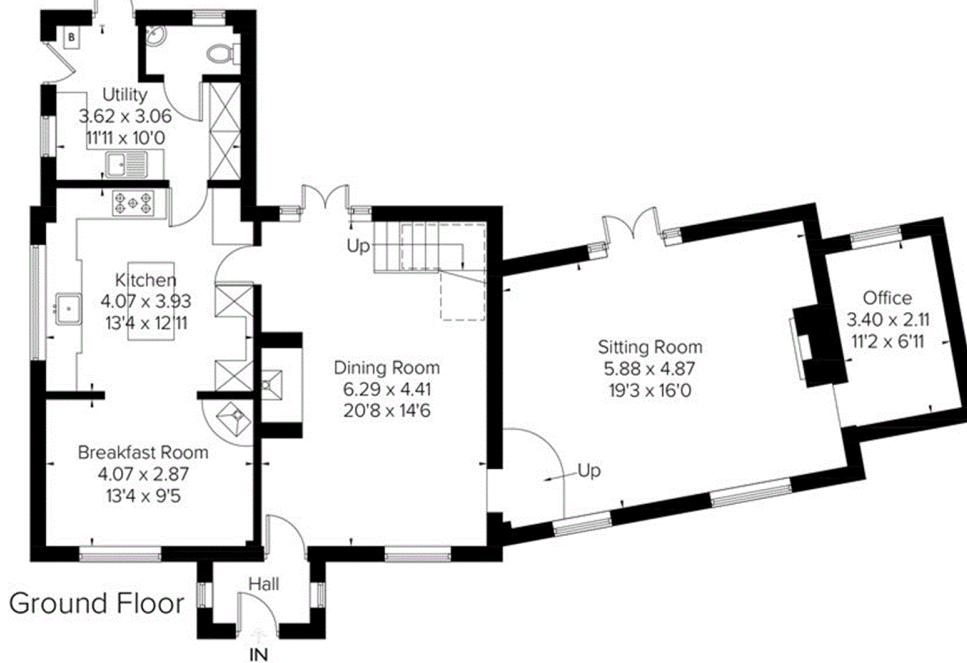


Fladbury, Pershore
 Approximate Gross Internal Area
 214.1 sq m / 2304 sq ft (Excluding Void)
 Outbuilding = 59.1 sq m / 636 sq ft
 Total = 273.2 sq m / 2940 sq ft



First Floor

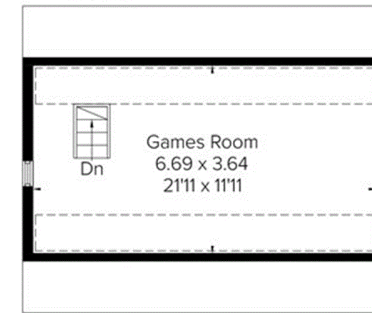


Ground Floor

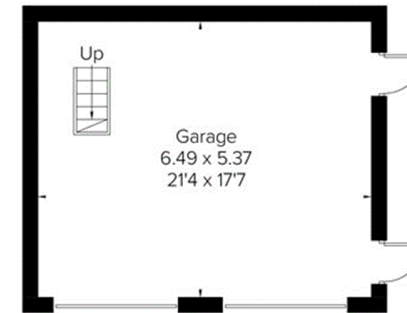


Floorplan © 2018
 0203 9056099 Ref: 222678
 This plan is for layout guidance only.
 Drawn in accordance with
 RICS guidelines. Not drawn to
 scale, unless stated. Windows &
 door openings are approximate.
 Whilst every care is taken in the
 preparation of this plan, please check
 all dimensions, shapes & compass
 bearings before making any
 decisions reliant upon them.

= Reduced headroom below 1.5m / 5'0"



Outbuilding First Floor



Outbuilding Ground Floor
 (Not Shown In Actual Location / Orientation)