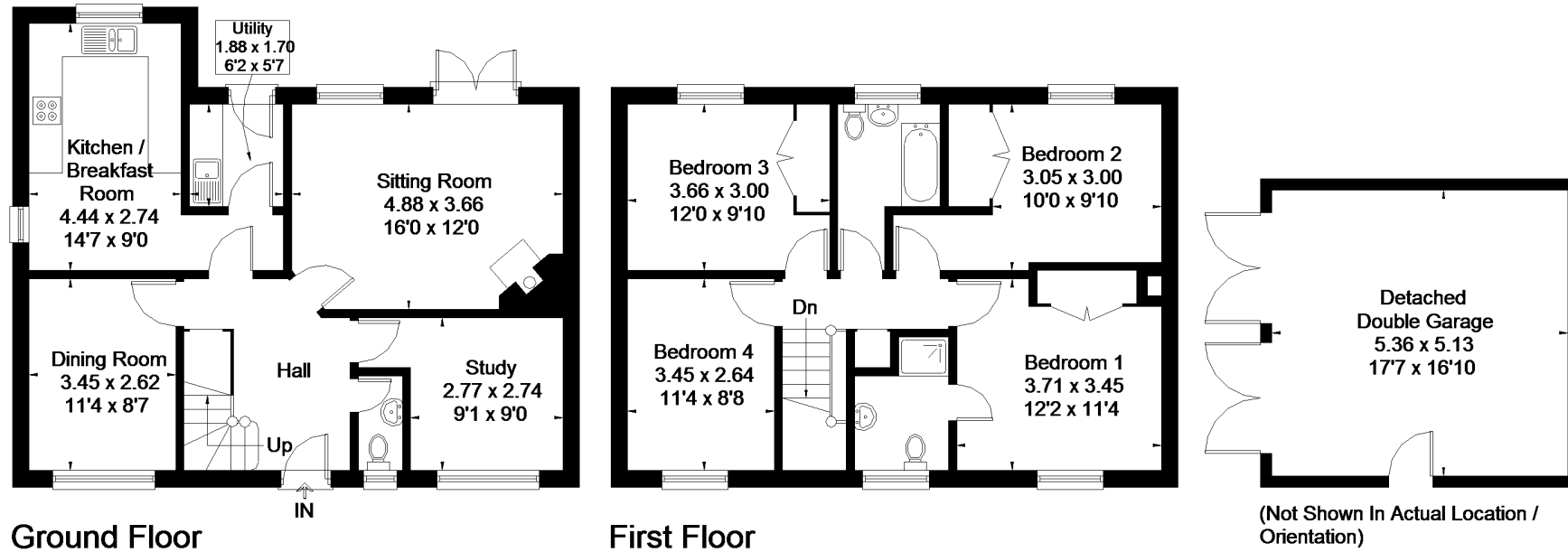


Windrush Court, Ford

Approximate Gross Internal Area = 131.9 sq m / 1420 sq ft
Detached Double Garage = 27.5 sq m / 296 sq ft
Total = 159.4 sq m / 1716 sq ft



FLOORPLANZ © 2018 0203 9056099 Ref: 201849

This plan is for layout guidance only. Drawn in accordance with RICS guidelines. Not drawn to scale unless stated. Windows & door openings are approximate. Whilst every care is taken in the preparation of this plan, please check all dimensions, shapes & compass bearings before making any decisions reliant upon them.