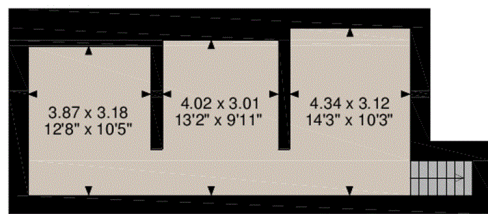
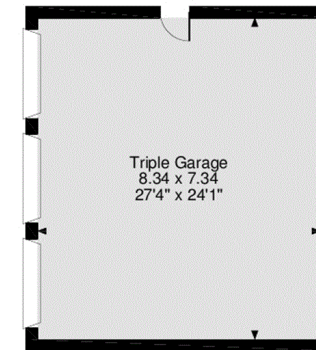
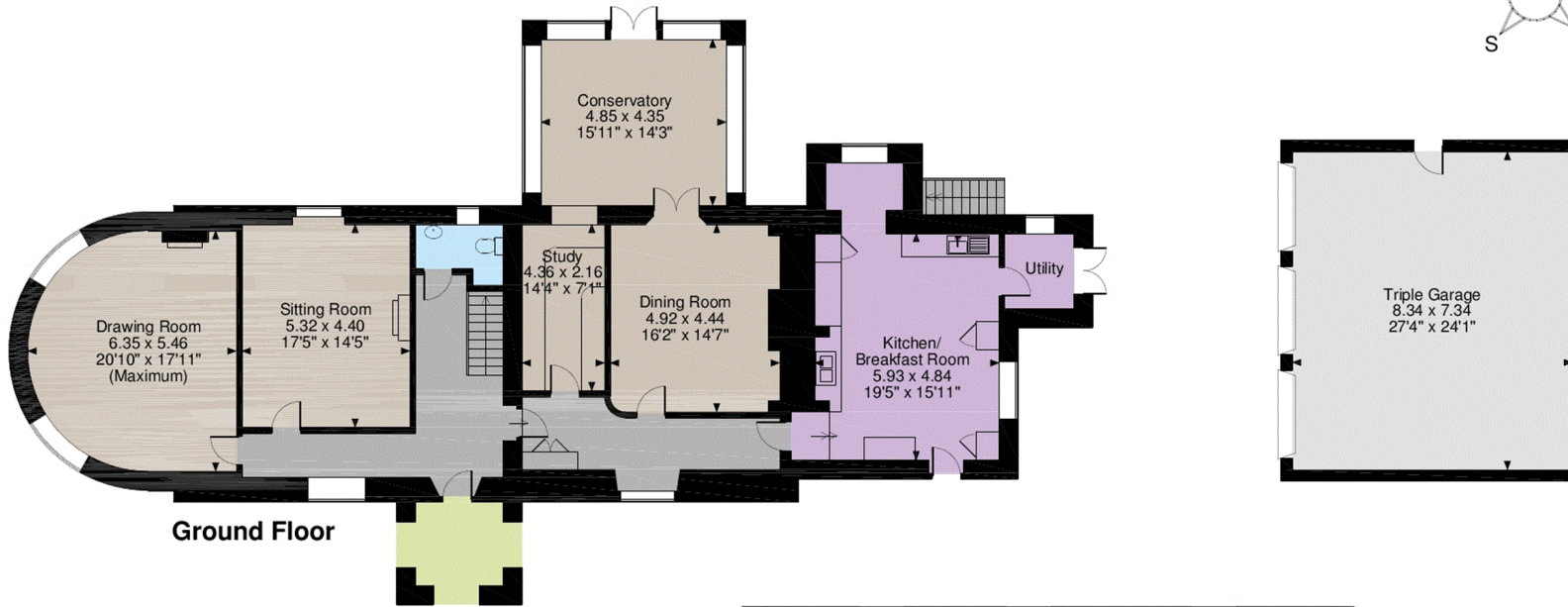
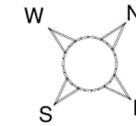


Woolmersdon House, Woolmersdon, North Petherton
Main House internal area 4,261 sq ft (396 sq m)
Garage internal area 659 sq ft (61 sq m)
Total internal area 4,920 sq ft (457 sq m)



Cellar

First Floor

FOR ILLUSTRATIVE PURPOSES ONLY - NOT TO SCALE

The position & size of doors, windows, appliances and other features are approximate only.

© ehouse. Unauthorised reproduction prohibited. Drawing ref. dig/8360877/OHL