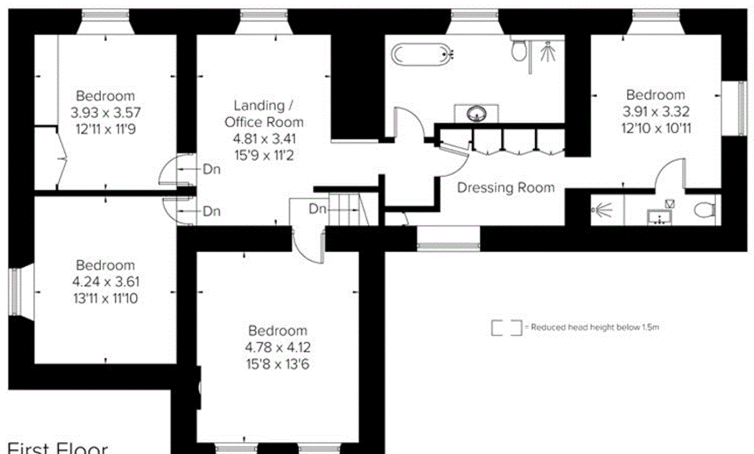
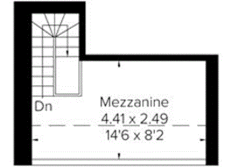


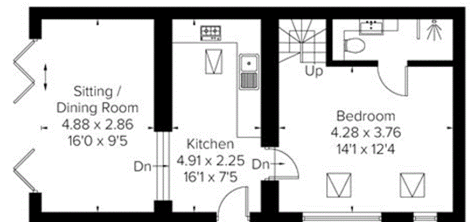
Approximate Floor Area = 250.2 sq m / 2693 sq ft
 Outbuildings = 63.8 sq m / 686 sq ft (Including Mezzanine)
 Garage / Workshop = 81.4 sq m / 876 sq ft
 Total = 395.4 sq m / 4255 sq ft
 Including Limited Use Area (8.6 sq m / 93 sq ft)



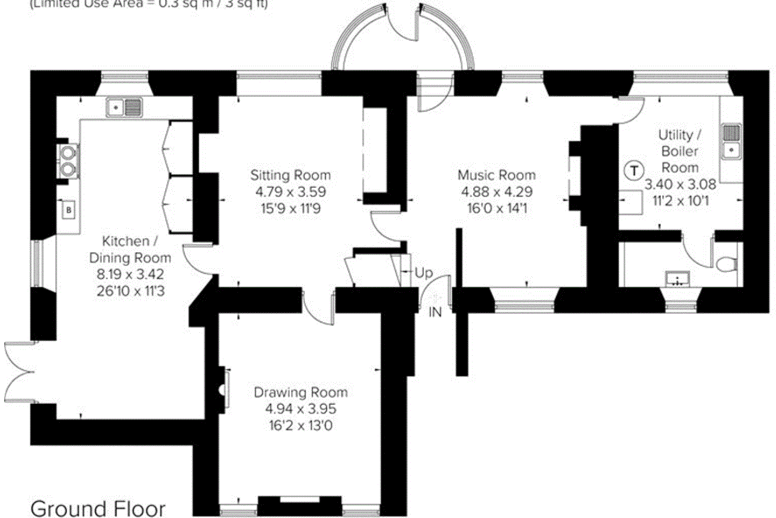
First Floor
 Area = 121.4 sq m / 1307 sq ft
 (Limited Use Area = 0.3 sq m / 3 sq ft)



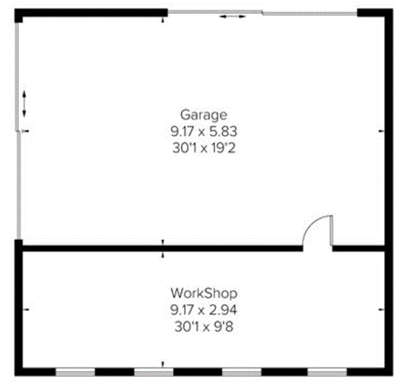
Outbuilding - First Floor
 Area = 12.4 sq m / 133 sq ft
 (Limited Use Area = 4.7 sq m / 51 sq ft)



Outbuilding - Ground Floor
 Area = 51.4 sq m / 553 sq ft
 (Not Shown In Actual Location / Orientation)



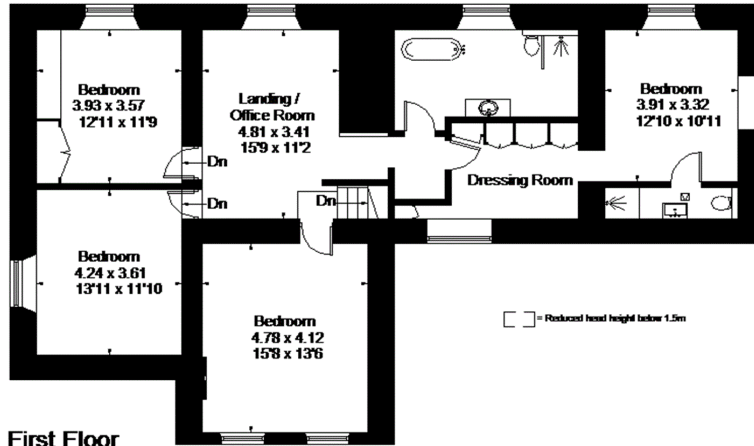
Ground Floor
 Area = 128.8 sq m / 1386 sq ft
 (Limited Use Area = 3.6 sq m / 39 sq ft)



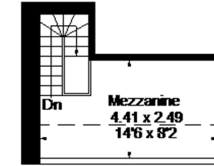
(Not Shown In Actual Location / Orientation)

Surveyed and drawn in accordance with the International Property Measurement Standards (IPMS 2: Residential)
 fourwalls-group.com 231908

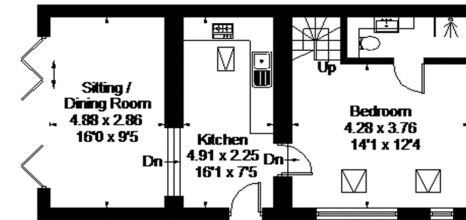
Approximate Floor Area = 250.2 sq m / 2693 sq ft
 Outbuildings = 63.8 sq m / 686 sq ft (Including Mezzanine)
 Garage / Workshop = 81.4 sq m / 876 sq ft
 Total = 395.4 sq m / 4255 sq ft
 Including Limited Use Area (8.6 sq m / 93 sq ft)



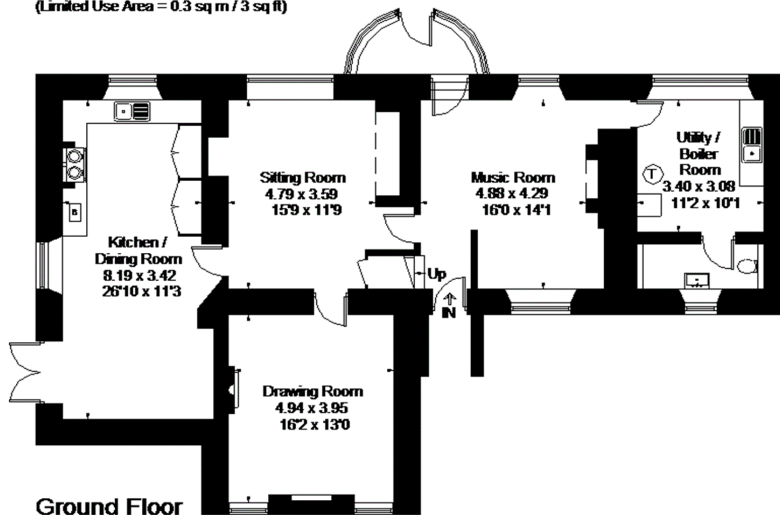
First Floor
 Area = 121.4 sq m / 1307 sq ft
 (Limited Use Area = 0.3 sq m / 3 sq ft)



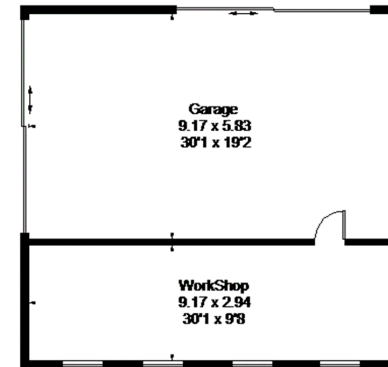
Outbuilding - First Floor
 Area = 12.4 sq m / 133 sq ft
 (Limited Use Area = 4.7 sq m / 51 sq ft)



Outbuilding - Ground Floor
 Area = 51.4 sq m / 553 sq ft
 (Not Shown In Actual Location / Orientation)



Ground Floor
 Area = 128.8 sq m / 1386 sq ft
 (Limited Use Area = 3.6 sq m / 39 sq ft)



(Not Shown In Actual Location / Orientation)

Surveyed and drawn in accordance with the International Property Measurement Standards (IPMS 2: Residential)
 fourwalls-group.com 231908