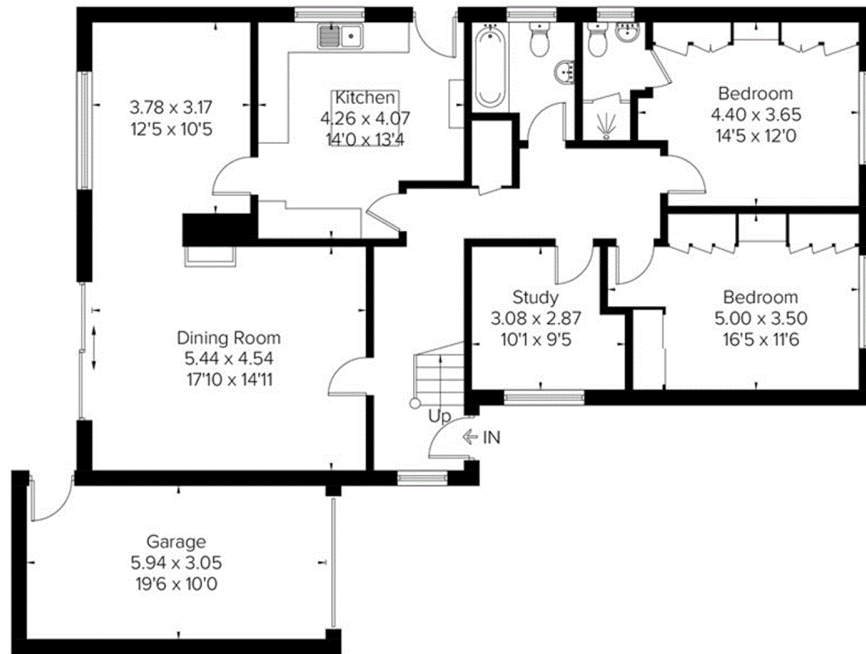


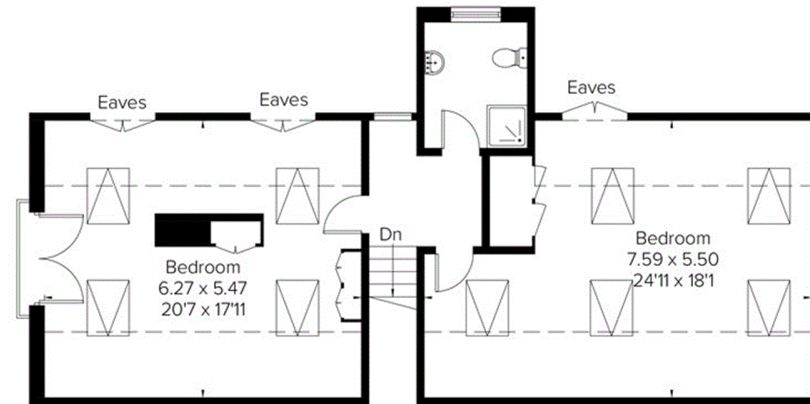
Approximate Floor Area = 209.4 sq m / 2253 sq ft
Garage = 18.2 sq m / 196 sq ft
Total = 227.6 sq m / 2449 sq ft
Including Limited Use Area (33.5 sq m / 360 sq ft)



= Reduced head height below 1.5m



Ground Floor
Area = 123.7 sq m / 1331 sq ft



First Floor
Area = 85.7 sq m / 922 sq ft
(Limited Use Area = 33.5 sq m / 360 sq ft)