

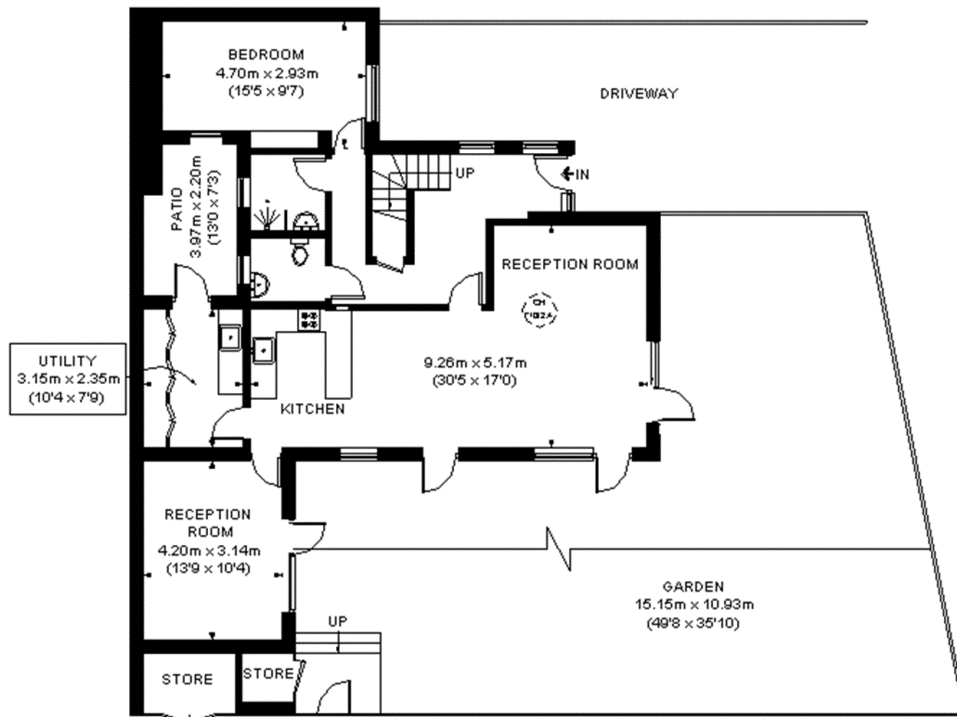
SECOND FLOOR



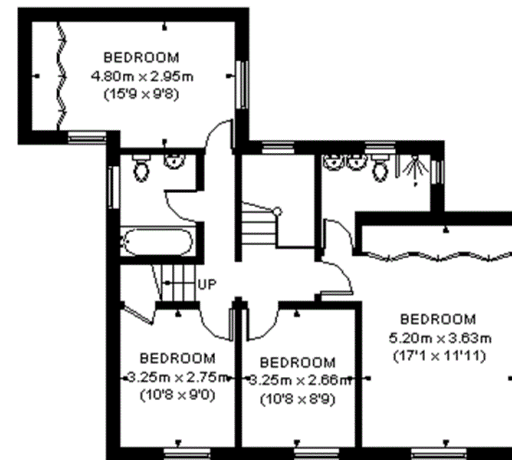
KIDBROOKE GARDENS

APPROXIMATE GROSS INTERNAL AREA
(EXCLUDING REDUCED HEADROOM / EAVES)
 GROUND FLOOR = 1053 SQ. FT. (97.8 SQ. M.)
 FIRST FLOOR = 793 SQ. FT. (73.7 SQ. M.)
 SECOND FLOOR = 181 SQ. FT. (16.8 SQ. M.)
 REDUCED HEADROOM / EAVES
 323 SQ. FT. (30 SQ. M.)
 STORE = 49 SQ. FT. (4.6 SQ. M.)
 TOTAL = 2399 SQ. FT. (222.9 SQ. M.)

This plan is for layout guidance only. Not drawn to scale unless stated. Windows and door openings are approximate. Whilst every care is taken in the preparation of this plan, please check all dimensions, shapes and compass bearings before making any decisions reliant upon them. Please be advised that Hamptons International / our agents have not seen or reviewed any building regulations or planning permission in relation to works carried out to the property (ID221480)



GROUND FLOOR



FIRST FLOOR



= SKYLIGHT / ROOF WINDOW



= REDUCED HEADROOM BELOW 1.5M / 5'0"