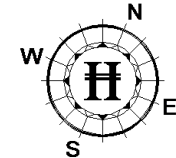





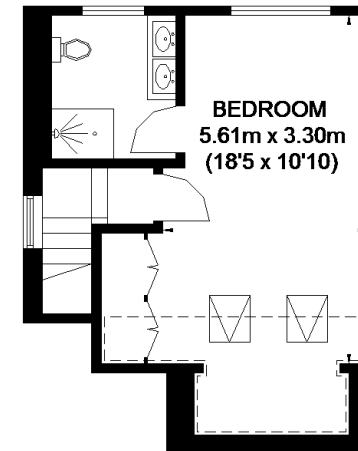
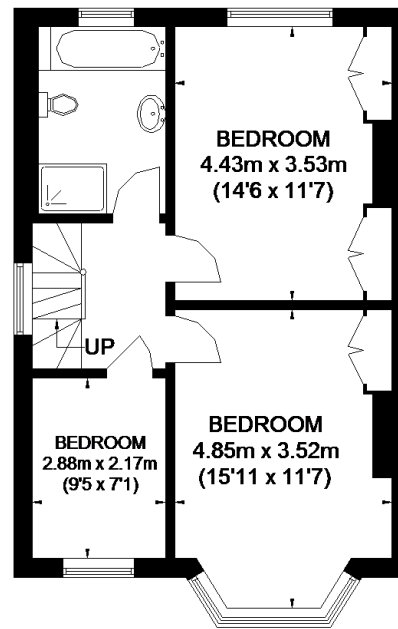
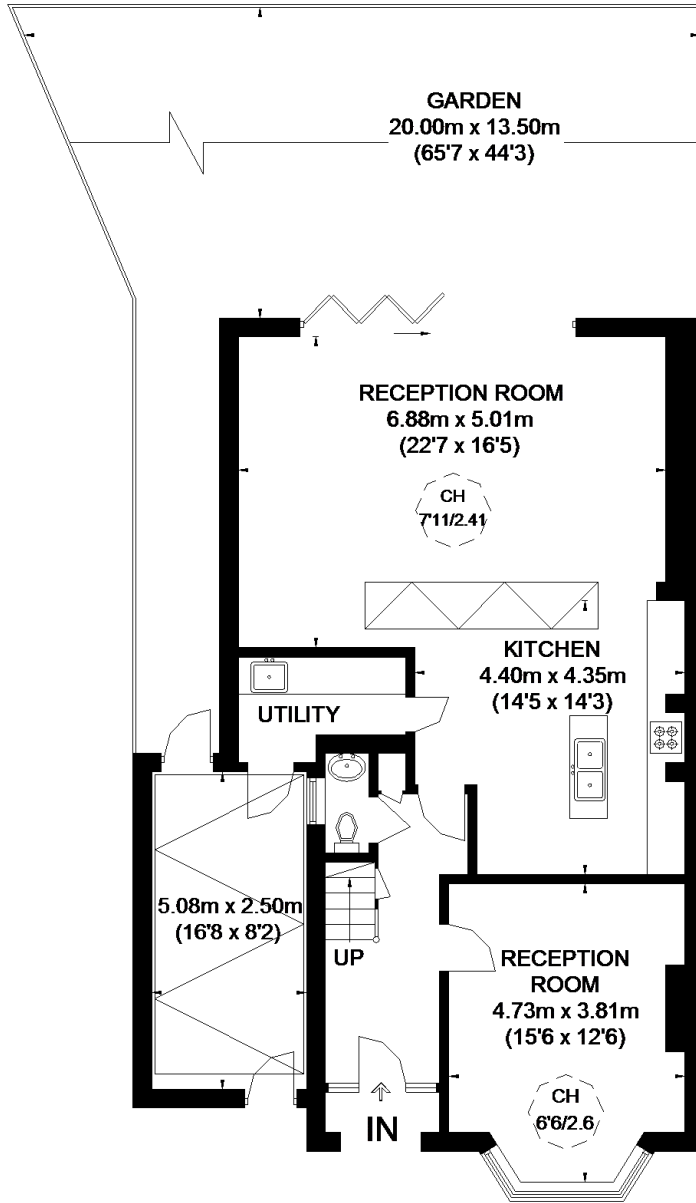
# KIDBROOKE PARK ROAD



APPROXIMATE GROSS INTERNAL AREA  
(EXCLUDING REDUCED HEADROOM)  
GROUND FLOOR = 1068 SQ. FT. (99.2 SQ. M.)  
FIRST FLOOR = 551 SQ. FT. (51.2 SQ. M.)  
SECOND FLOOR = 273 SQ. FT. (25.4 SQ. M.)  
REDUCED HEADROOM  
66 SQ. FT. (6.1 SQ. M.)  
TOTAL = 1958 SQ. FT. (181.9 SQ. M.)

-  = CEILING HEIGHT
-  = SKYLIGHT / ROOF WINDOW
-  = REDUCED HEADROOM BELOW 1.5M / 5'0"

This plan is for layout guidance only. Not drawn to scale unless stated. Windows and door openings are approximate. Whilst every care is taken in the preparation of this plan, please check all dimensions, shapes and compass bearings before making any decisions reliant upon them. Please be advised that Hamptons International / our agents have not seen or reviewed any building regulations or planning permission in relation to works carried out to the property (ID476951)



**GROUND FLOOR**

**FIRST FLOOR**

**SECOND FLOOR**