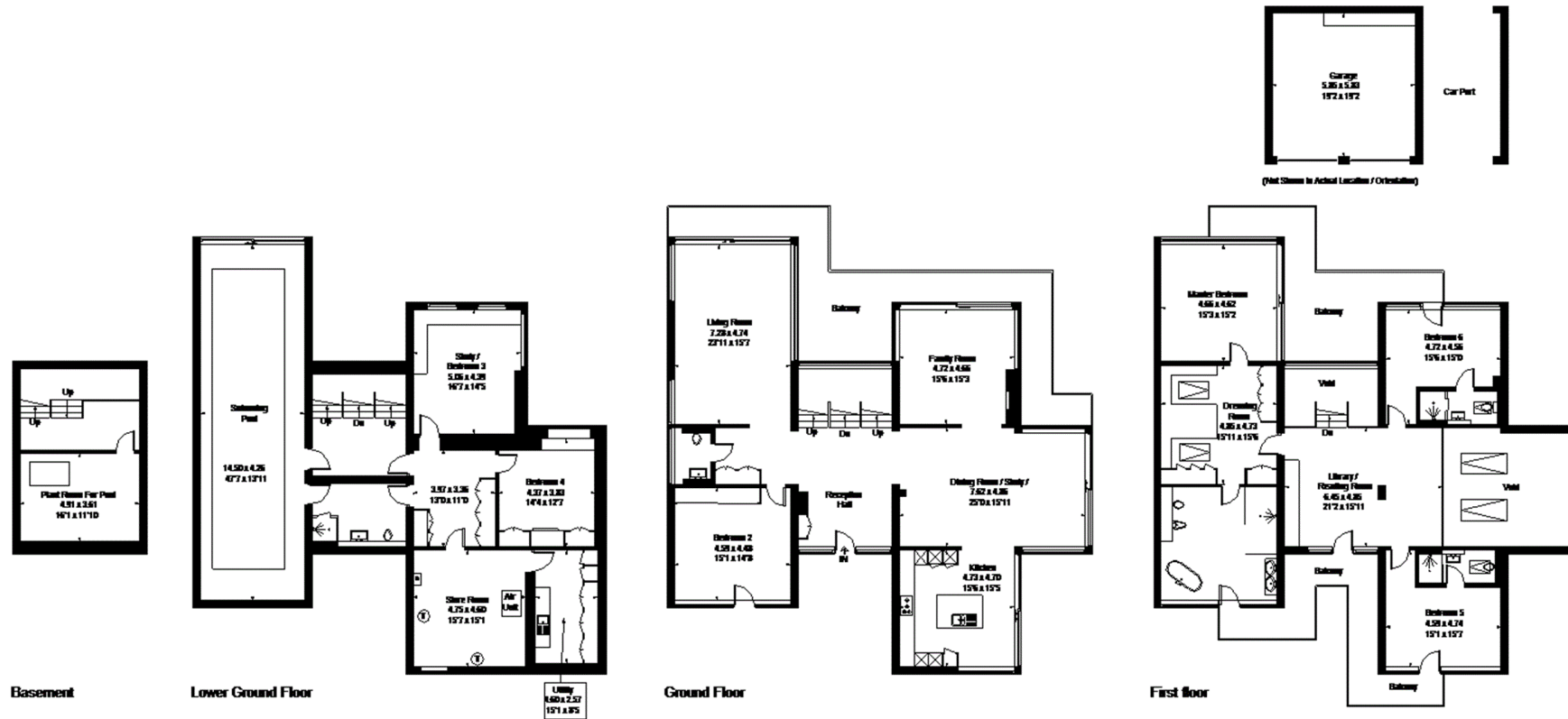


Hare Lane, Little Kingshill, Great Missenden
 Approximate Gross Internal Area = 523.4 sq m / 5634 sq ft (Excluding Void)
 Basement = 34.5 sq m / 371 sq ft
 Garage = 34.2 sq m / 368 sq ft
 Total = 592.1sq m / 6373 sq ft



FLOORPLANZ © 2018 0203 9056099 Ref: 215528

This plan is for layout guidance only. Drawn in accordance with RICS guidelines. Not drawn to scale unless stated. Windows & door openings are approximate. Whilst every care is taken in the preparation of this plan, please check all dimensions, shapes & compass bearings before making any decisions reliant upon them.