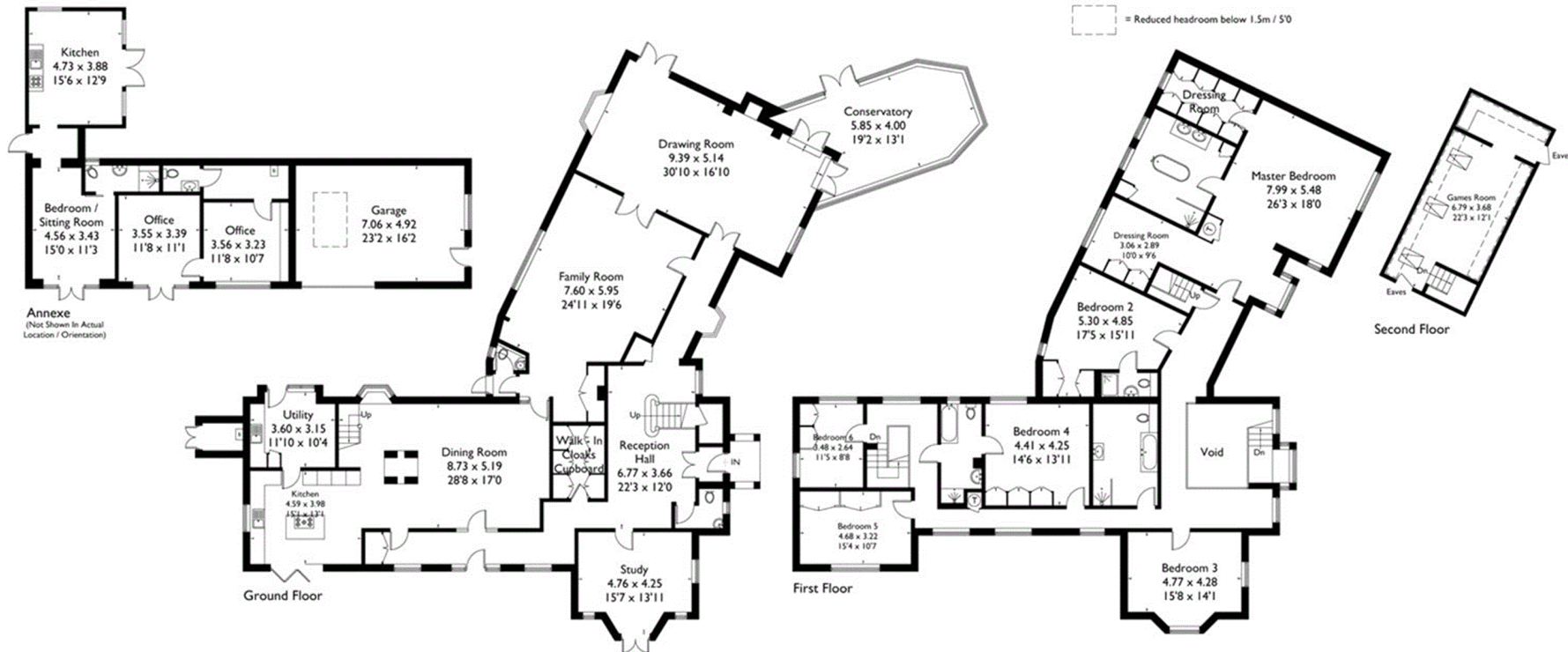


## Loudwater Drive, Loudwater, Rickmansworth

Approximate Gross Internal Area = 546.7 sq m / 5884 sq ft  
 Outbuilding = 109.8 sq m / 1183 sq ft (Excludes Void)  
 Total = 656.5 sq m / 7067 sq ft



FLOORPLANZ © 2018 0203 9056099 Ref: 211175

This plan is for layout guidance only. Drawn in accordance with RICS guidelines. Not drawn to scale unless stated. Windows & door openings are approximate. Whilst every care is taken in the preparation of this plan, please check all dimensions, shapes & compass bearings before making any decisions reliant upon them.