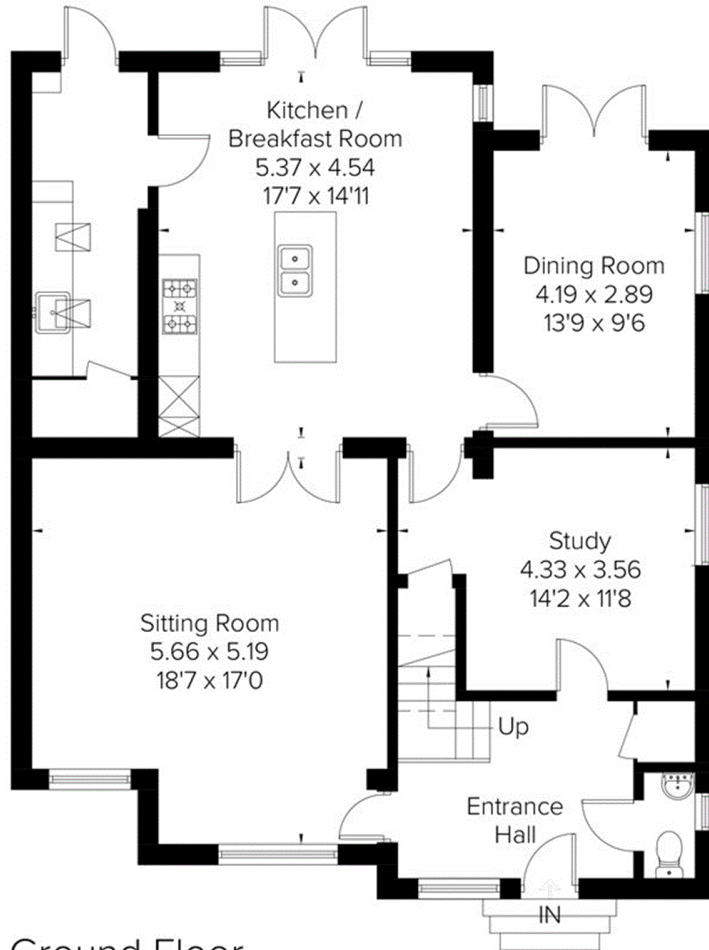
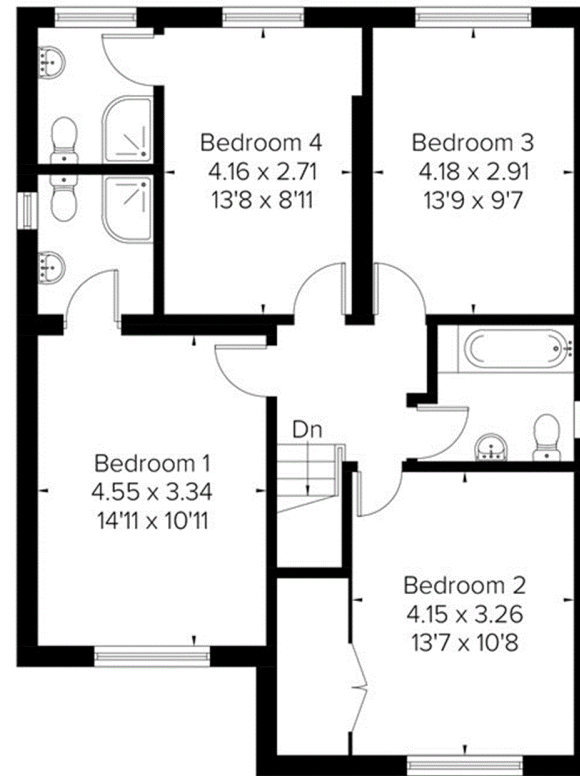


Approximate Floor Area = 184.6 sq m / 1987 sq ft
 Garage = 23.7 sq m / 256 sq ft
 Total = 208.3 sq m / 2243 sq ft
 Including Limited Use Area (0.9 sq m / 10 sq ft)

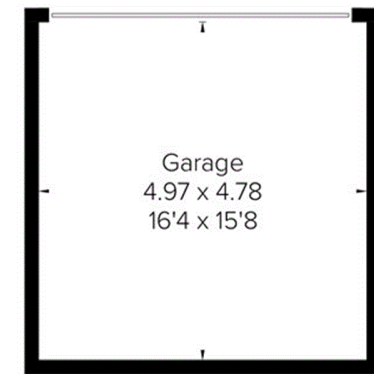


Ground Floor
 Area = 106.6 sq m / 1147sq ft
 (Limited Use Area = 0.9 sq m / 10 sq ft)



First Floor
 Area = 78.0 sq m / 839 sq ft

= Reduced head height below 1.5m



(Not Shown In Actual
 Location / Orientation)