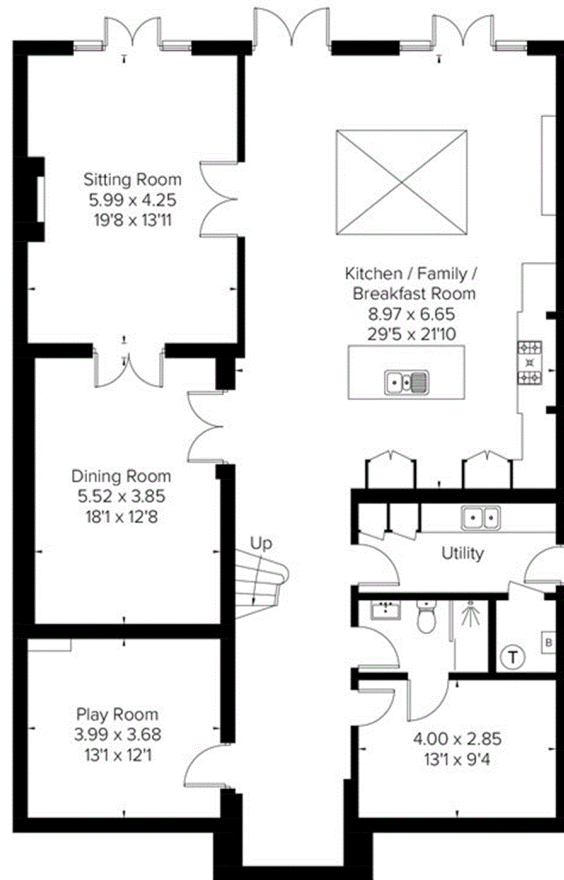
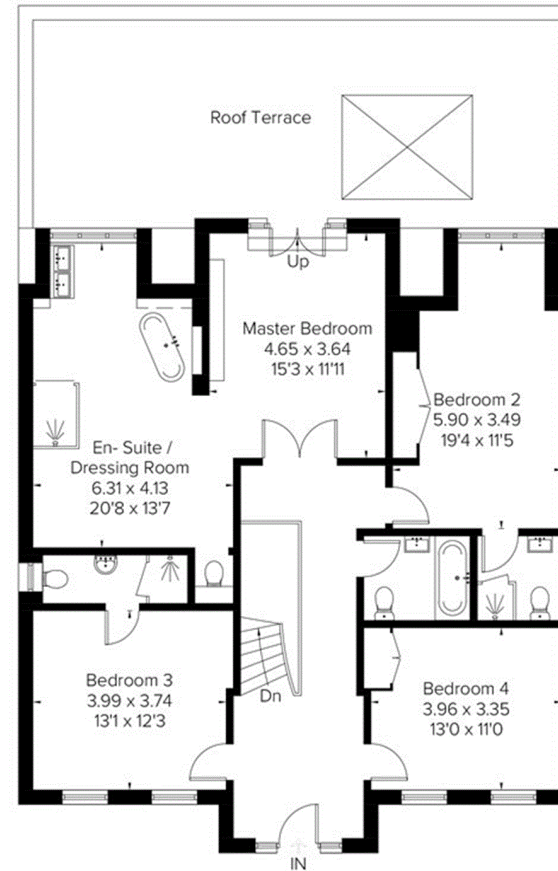


Approximate Area = 297.5 sq m / 3202 sq ft
Including Limited Use Area (0.9 sq m / 10 sq ft)

 = Reduced head height below 1.5m



Lower Ground Floor
Area = 174.4 sq m / 1877 sq ft



Ground Floor
Area = 123.1 sq m / 1325 sq ft
(Limited Use Area = 0.9 sq m / 10 sq ft)