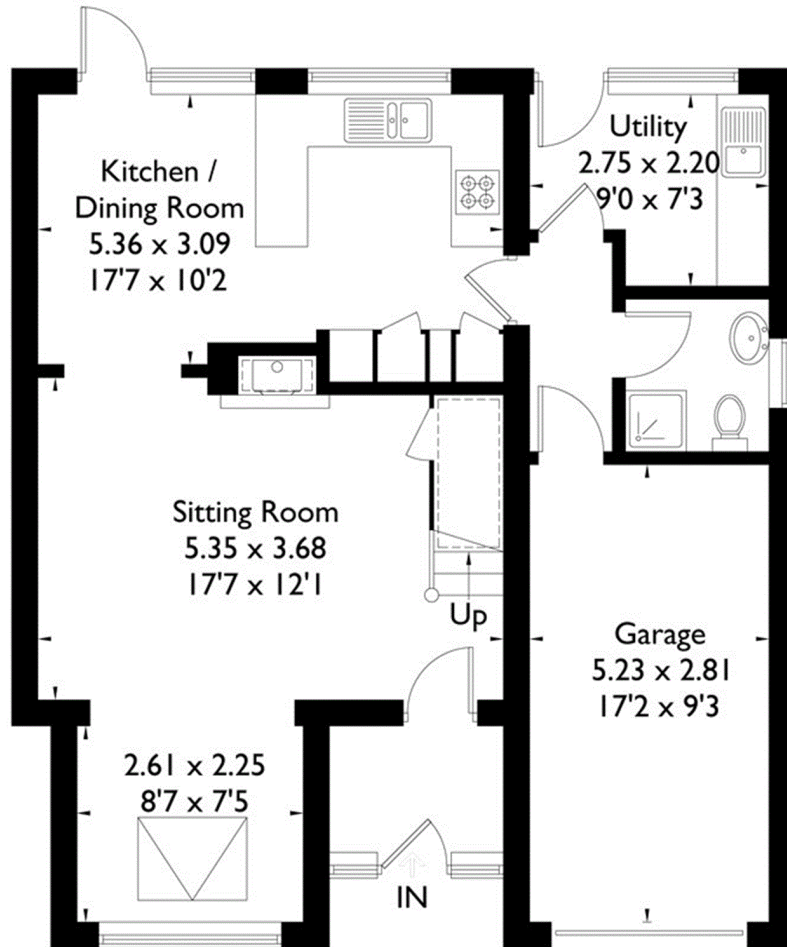
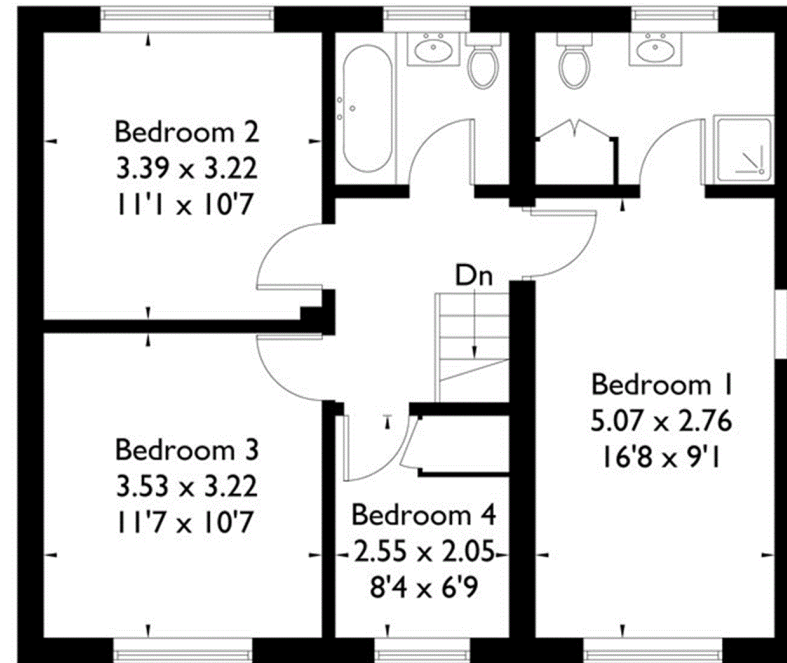


Stratford Drive, Wooburn Green, High Wycombe

Approximate Gross Internal Area = 135.0 sq m / 1453 sq ft (Including Garage)



Ground Floor



First Floor

= Reduced headroom below 1.5m / 5'0

FLOORPLANZ © 2018 0203 9056099 Ref: 218837

This plan is for layout guidance only. Drawn in accordance with RICS guidelines. Not drawn to scale unless stated. Windows & door openings are approximate. Whilst every care is taken in the preparation of this plan, please check all dimensions, shapes & compass bearings before making any decisions reliant upon them.