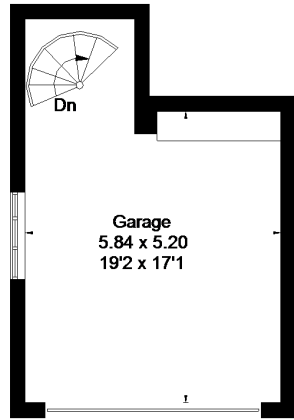
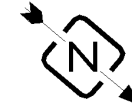
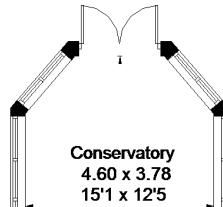


Magnolia Dene, Hazlemere, High Wycombe

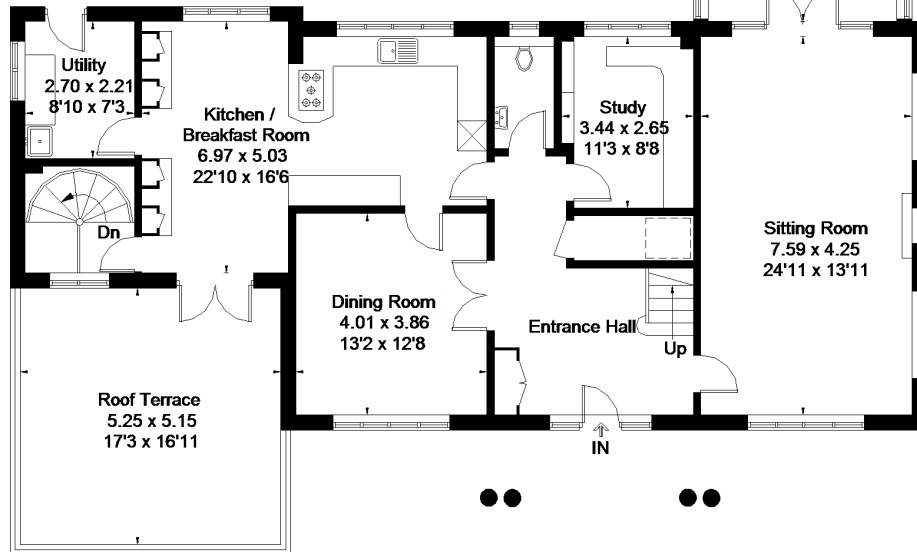
Approximate Gross Internal Area
 House = 234.3 sq m / 2522 sq ft
 Garage = 34.2 sq m / 368 sq ft
 Total = 268.8 sq m / 2890 sq ft



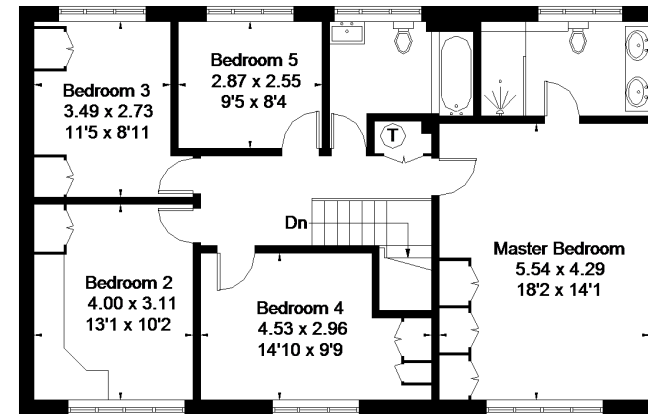
Lower Ground Floor



= Reduced headroom below 1.5m / 5'0"



Ground Floor



First Floor

FLOORPLANZ © 2017 0203 9056099 Ref: 198030

This plan is for layout guidance only. Drawn in accordance with RICS guidelines. Not drawn to scale unless stated. Windows & door openings are approximate. Whilst every care is taken in the preparation of this plan, please check all dimensions, shapes & compass bearings before making any decisions reliant upon them.