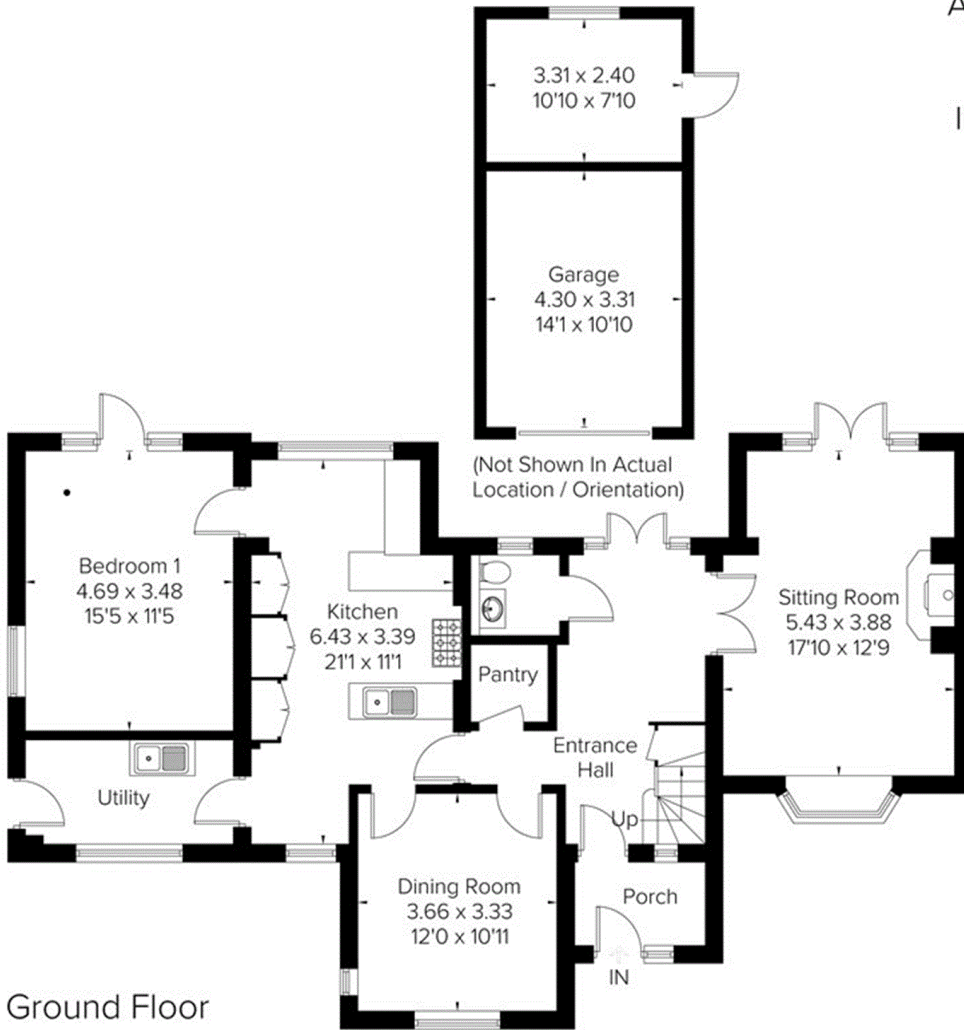


Approximate Floor Area = 191.3 sq m / 2059 sq ft
 Garage = 22.6 sq m / 243 sq ft
 Total = 213.9 sq m / 2302 sq ft
 Including Limited Use Area (11.5 sq m / 123 sq ft)

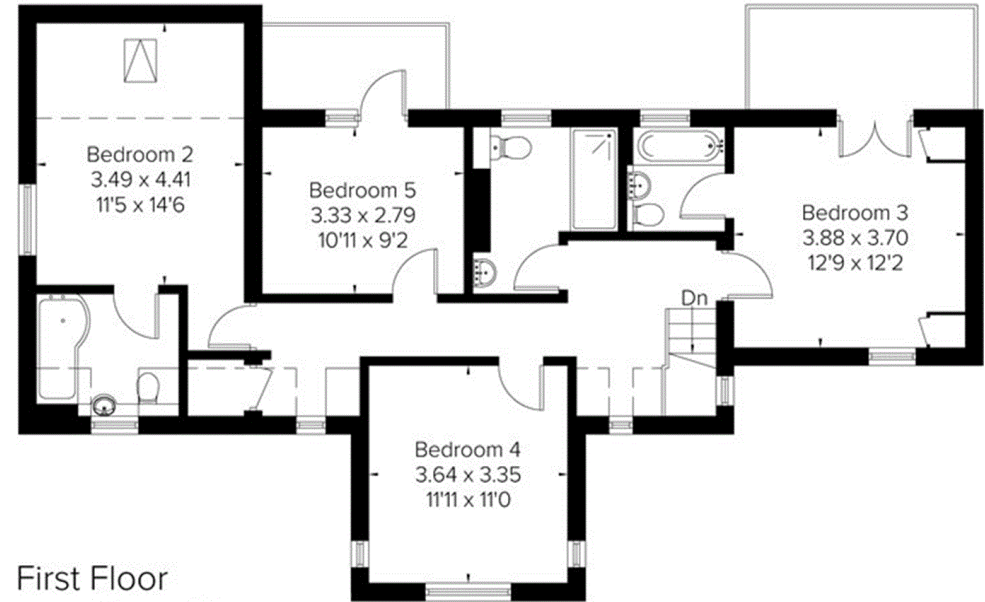


= Reduced head height below 1.5m



Ground Floor

Area = 104.5 sq m / 1125 sq ft
 (Limited Use Area = 2 sq m / 21 sq ft)



First Floor

Area = 86.8 sq m / 934 sq ft
 (Limited Use Area = 9.5 sq m / 102 sq ft)