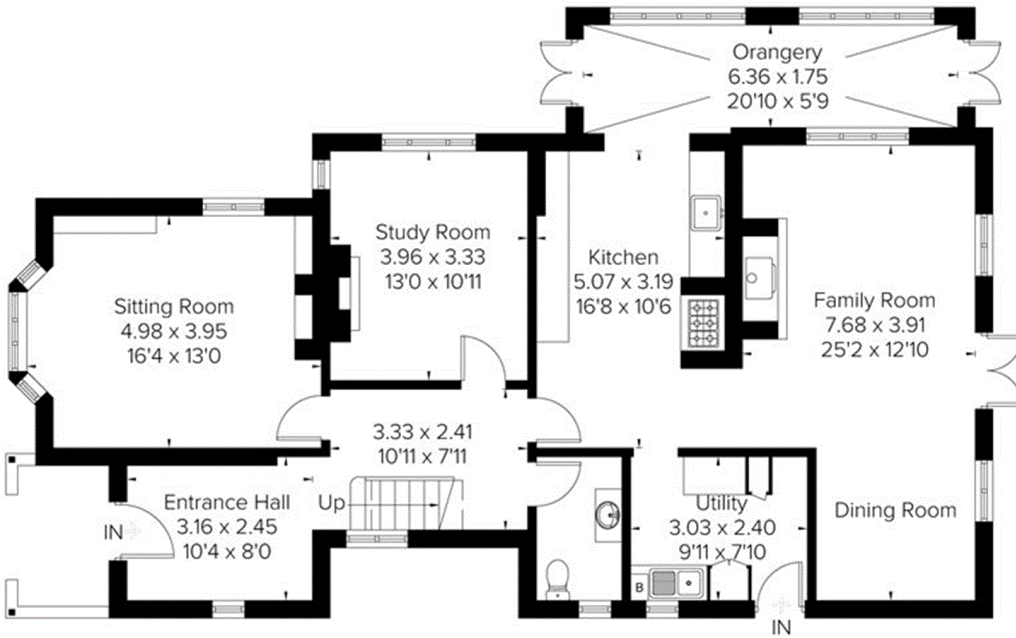
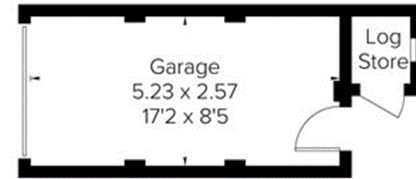


Grove Road, Hazlemere, HP15

Approximate Area = 220.4 sq m / 2372 sq ft  
Garage / Log Store = 14.5 sq m / 156 sq ft  
Total = 234.9 sq m / 2528 sq ft  
Including Limited Use Area (1.8 sq m / 19 sq ft)

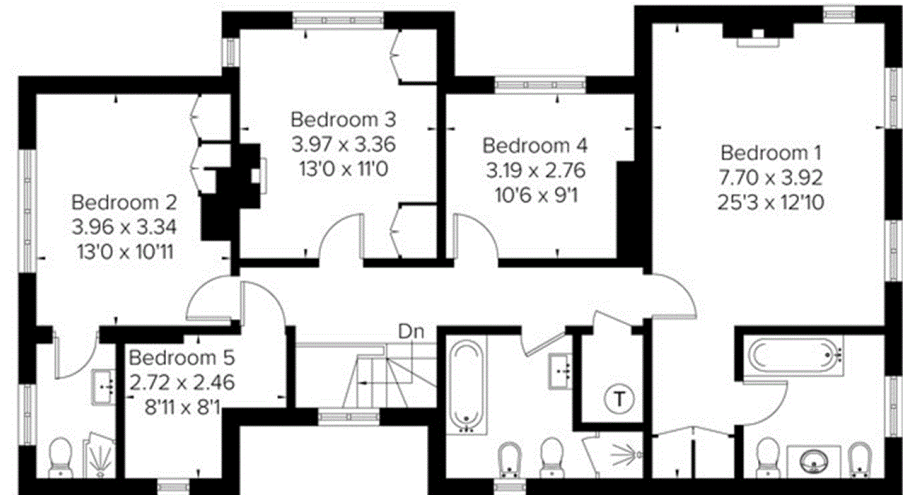


Ground Floor



(Not Shown In Actual Location / Orientation)

= Reduced head height below 1.5m



First Floor