

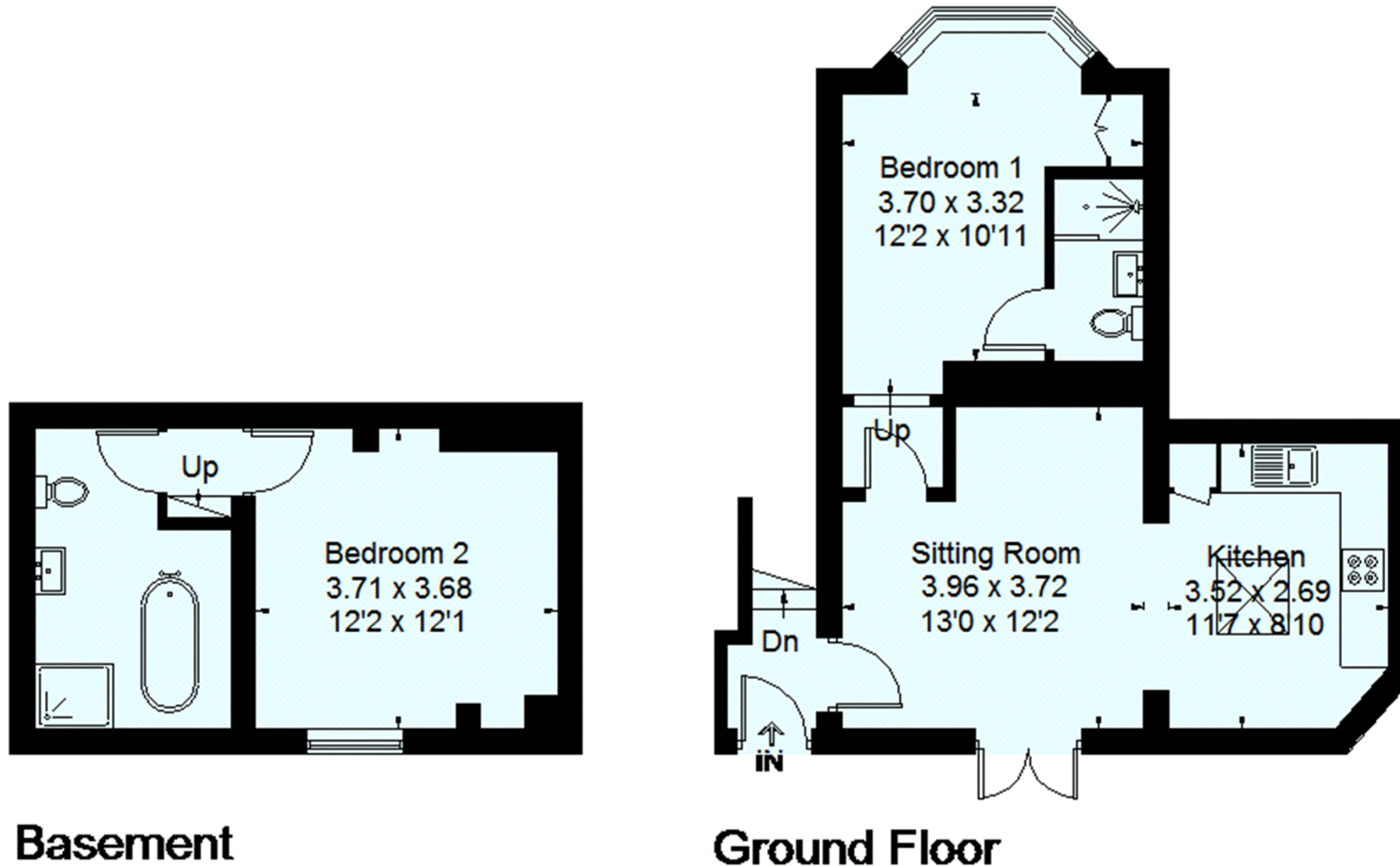
### Lukes Road, Maidenhead

Approximate Gross Internal Area

43.2 sq m / 465 sq ft

Basement = 23.7 sq m / 255 sq ft

Total = 66.9 sq m / 720 sq ft



Basement

Ground Floor

FLOORPLANZ © 2018 0203 9056099 Ref 213196

This plan is for layout guidance only. Drawn in accordance with RICS guidelines. Not drawn to scale unless stated. Windows & door openings are approximate. Whilst every care is taken in the preparation of this plan, please check all dimensions, shapes & compass bearings before making any decisions reliant upon the