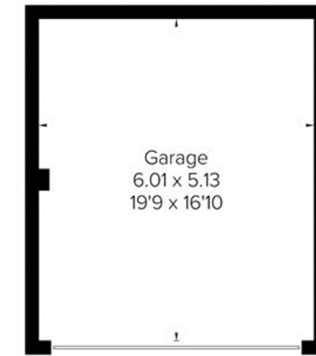
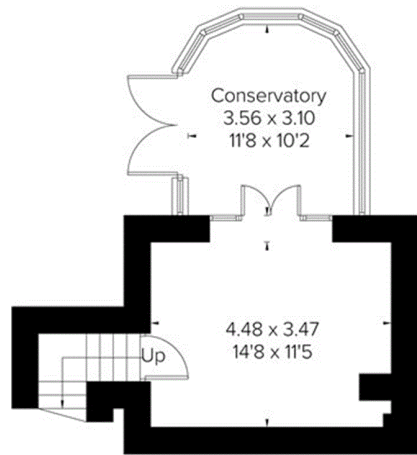




Approximate Floor Area = 200.3 sq m / 2156 sq ft
Garage = 30.8 sq m / 331 sq ft
Total = 231.1 sq m / 2487 sq ft
Including Limited Use Area (9.4 sq m / 101 sq ft)



(Not Shown In Actual Location / Orientation)



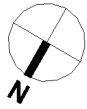
Lower Ground Floor



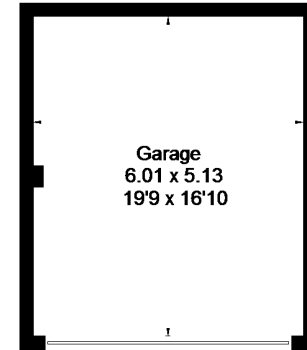
Ground Floor



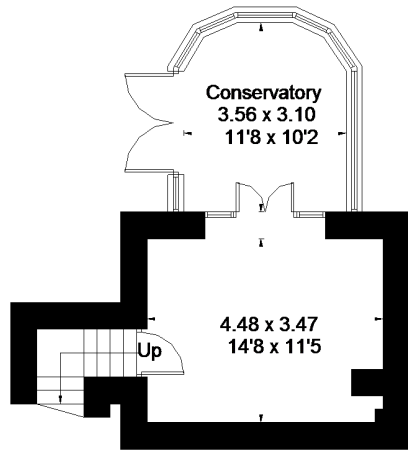
First Floor



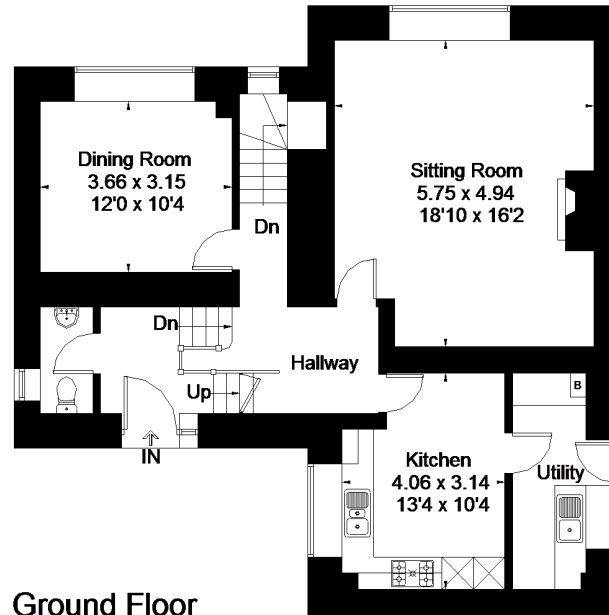
Approximate Floor Area = 200.3 sq m / 2156 sq ft
Garage = 30.8 sq m / 331 sq ft
Total = 231.1 sq m / 2487 sq ft
Including Limited Use Area (9.4 sq m / 101 sq ft)



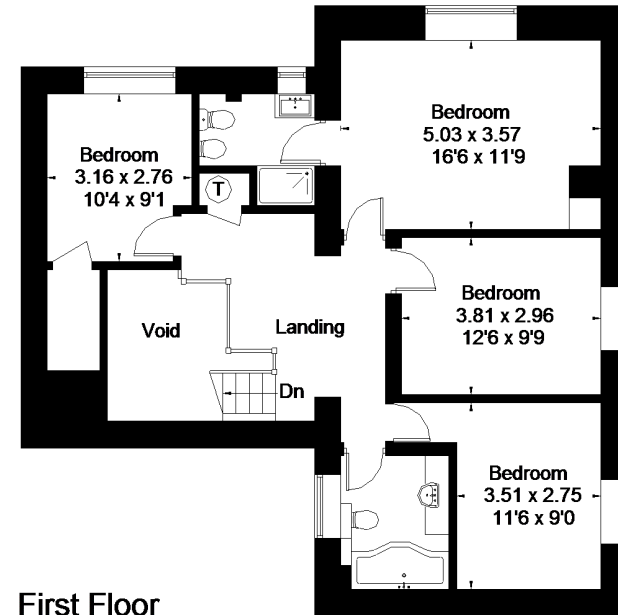
(Not Shown In Actual Location / Orientation)



Lower Ground Floor



Ground Floor



First Floor