
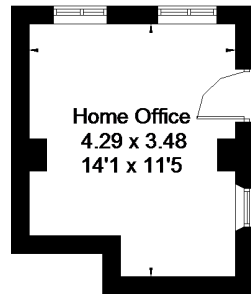


Marshfield

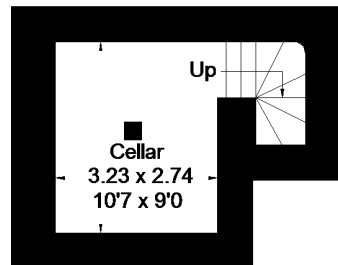
Approximate Gross Internal Area = 168.9 sq m / 1818 sq ft
 Cellar = 11.5 sq m / 124 sq ft
 Outbuilding = 14.1 sq m / 152 sq ft
 Total = 194.5 sq m / 2094 sq ft



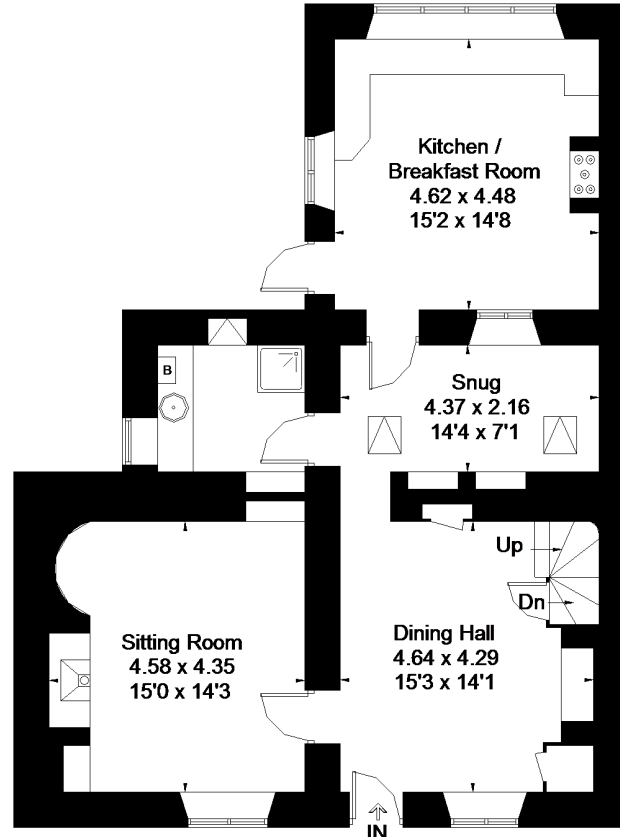
 = Reduced headroom below 1.5m / 5'0"



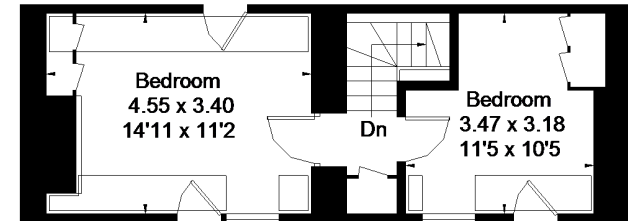
(Not Shown In Actual Location / Orientation)
Outbuilding



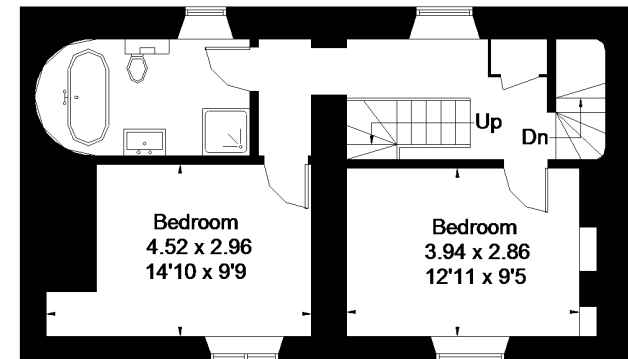
Cellar



Ground Floor



Second Floor



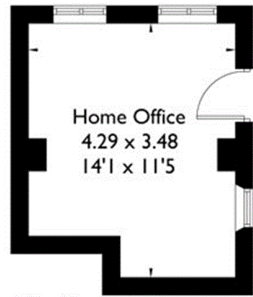
First Floor

FLOORPLANZ © 2018 0203 9056099 Ref: 207852

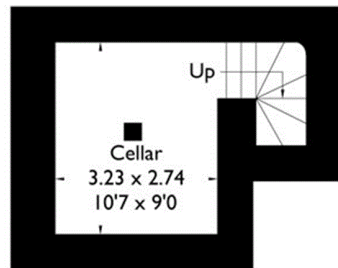
This plan is for layout guidance only. Drawn in accordance with RICS guidelines. Not drawn to scale unless stated. Windows & door openings are approximate. Whilst every care is taken in the preparation of this plan, please check all dimensions, shapes & compass bearings before making any decisions reliant upon them.

Marshfield

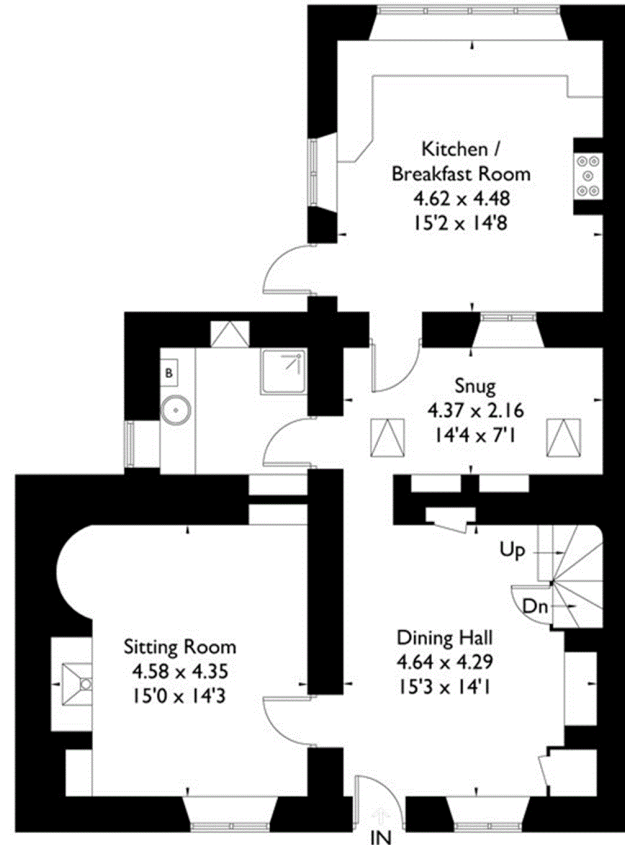
Approximate Gross Internal Area = 168.9 sq m / 1818 sq ft
 Cellar = 11.5 sq m / 124 sq ft
 Outbuilding = 14.1 sq m / 152 sq ft
 Total = 194.5 sq m / 2094 sq ft



(Not Shown In Actual Location / Orientation)
Outbuilding

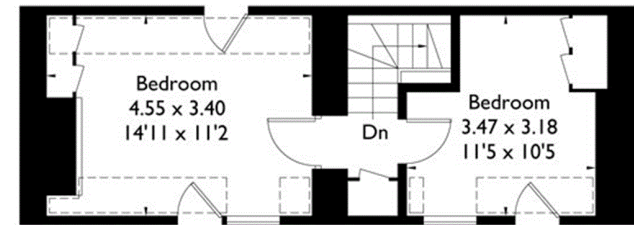


Cellar

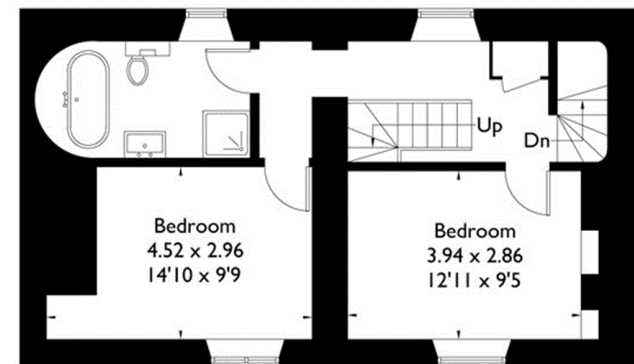


Ground Floor

= Reduced headroom below 1.5m / 5'0"



Second Floor



First Floor

FLOORPLANZ © 2018 0203 9056099 Ref: 207852

This plan is for layout guidance only. Drawn in accordance with RICS guidelines. Not drawn to scale unless stated. Windows & door openings are approximate. Whilst every care is taken in the preparation of this plan, please check all dimensions, shapes & compass bearings before making any decisions reliant upon them.