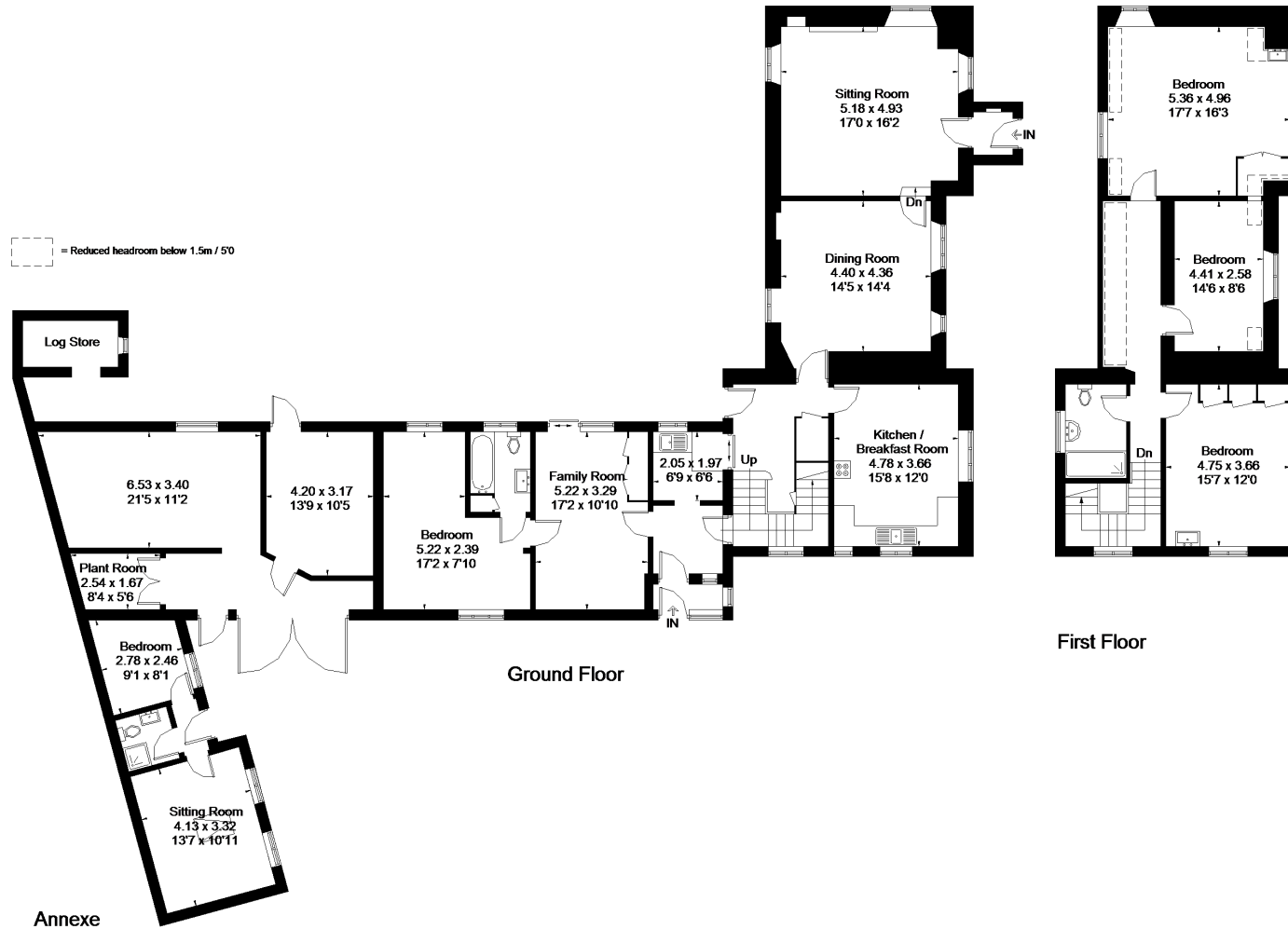


# Ringwell Lane, Norton St. Philip, Bath

Approximate Gross Internal Area = 292.9 sq m / 3153 sq ft  
Store = 3.8 sq m / 41 sq ft  
Total = 296.7 sq m / 3194 sq ft



FLOORPLANZ © 2018 0203 9056099 Ref: 201879

This plan is for layout guidance only. Drawn in accordance with RICS guidelines. Not drawn to scale unless stated. Windows & door openings are approximate. Whilst every care is taken in the preparation of this plan, please check all dimensions, shapes & compass bearings before making any decisions reliant upon them.