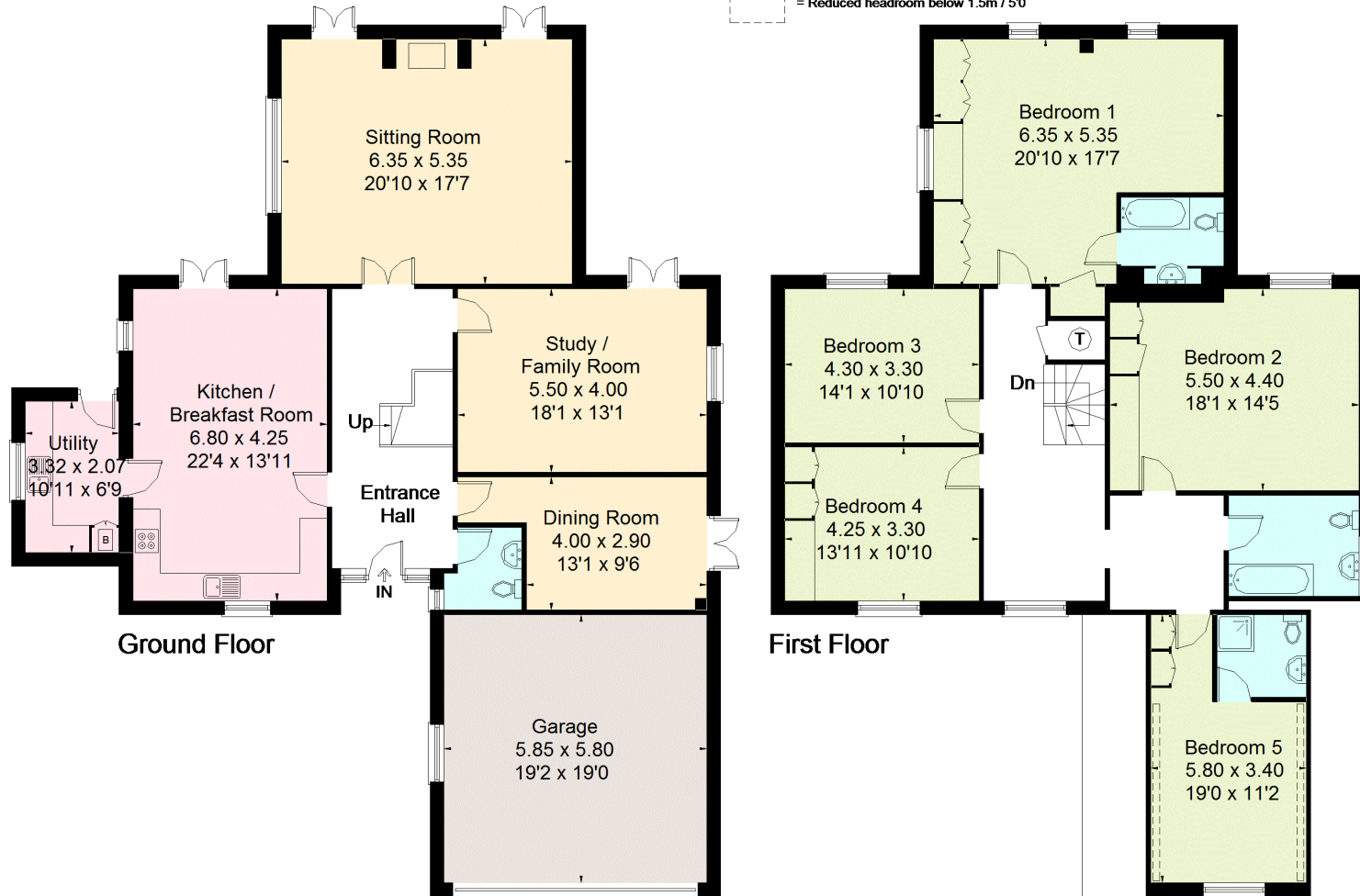


Hardwick House, Warwick Road, Upper Boddington, Daventry

Approximate Gross Internal Area = 268.0 sq m / 2884 sq ft
Garage = 33.6 sq m / 362 sq ft
Total = 301.6 sq m / 3246 sq ft



= Reduced headroom below 1.5m / 5'0"



FLOORPLANZ © 2018 0203 9056099 Ref: 204946

This plan is for layout guidance only. Drawn in accordance with RICS guidelines. Not drawn to scale unless stated. Windows & door openings are approximate. Whilst every care is taken in the preparation of this plan, please check all dimensions, shapes & compass bearings before making any decisions reliant upon them.