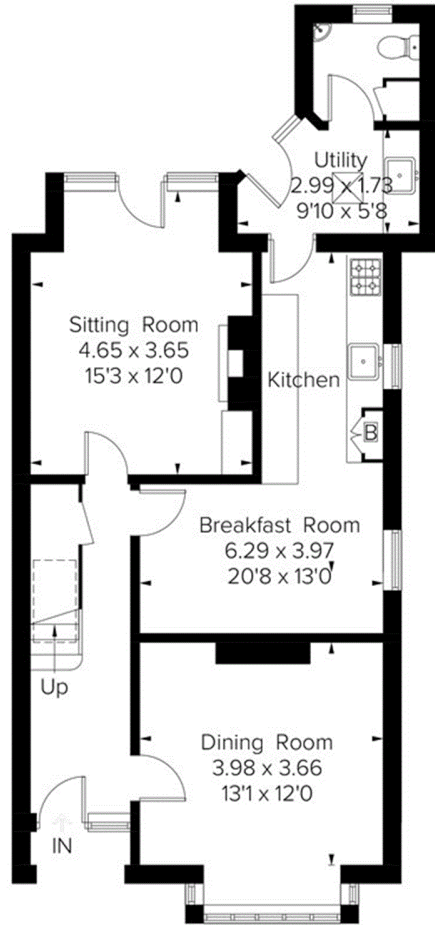


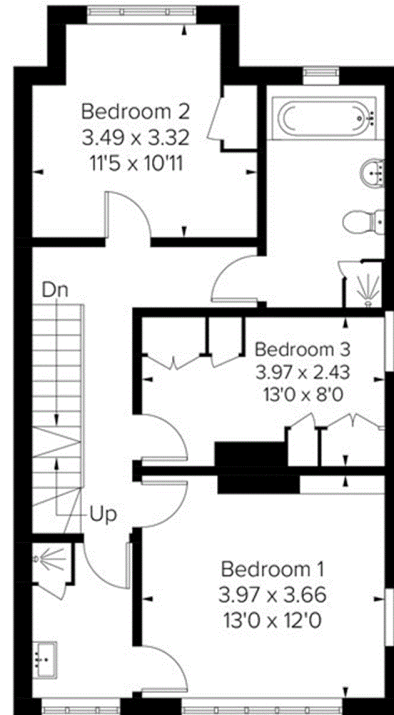


Approximate Floor Area = 175.4 sq m / 1888 sq ft
 Including Limited Use Area (9.8 sq m / 105 sq ft)
 Outbuildings = 11.0 sq m / 118 sq ft
 Total = 186.4 sq m / 2006 sq ft

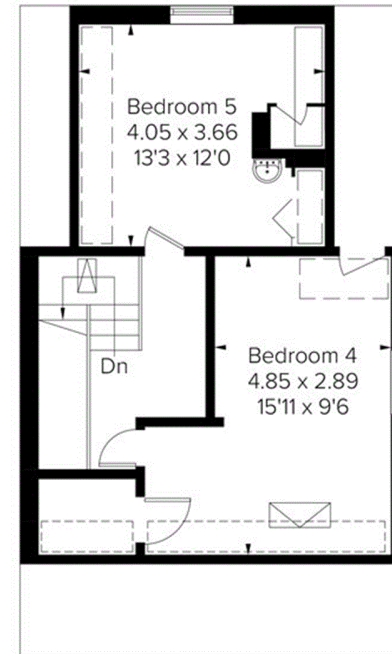
= Reduced head height below 1.5m



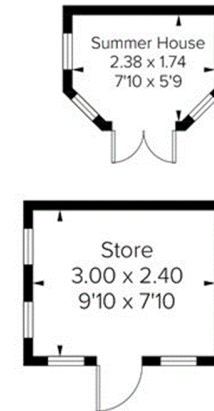
Ground Floor
 Area = 70.4 sq m / 758 sq ft
 (Limited Use Area = 1.7 sq m / 18 sq ft)



First Floor
 Area = 60.8 sq m / 654 sq ft



Second Floor
 Area = 43.8 sq m / 471 sq ft
 (Limited Use Area = 8.1 sq m / 87 sq ft)



Outbuildings
 Area = 11.0 sq m / 118 sq ft
 (Not Shown In Actual Location / Orientation)