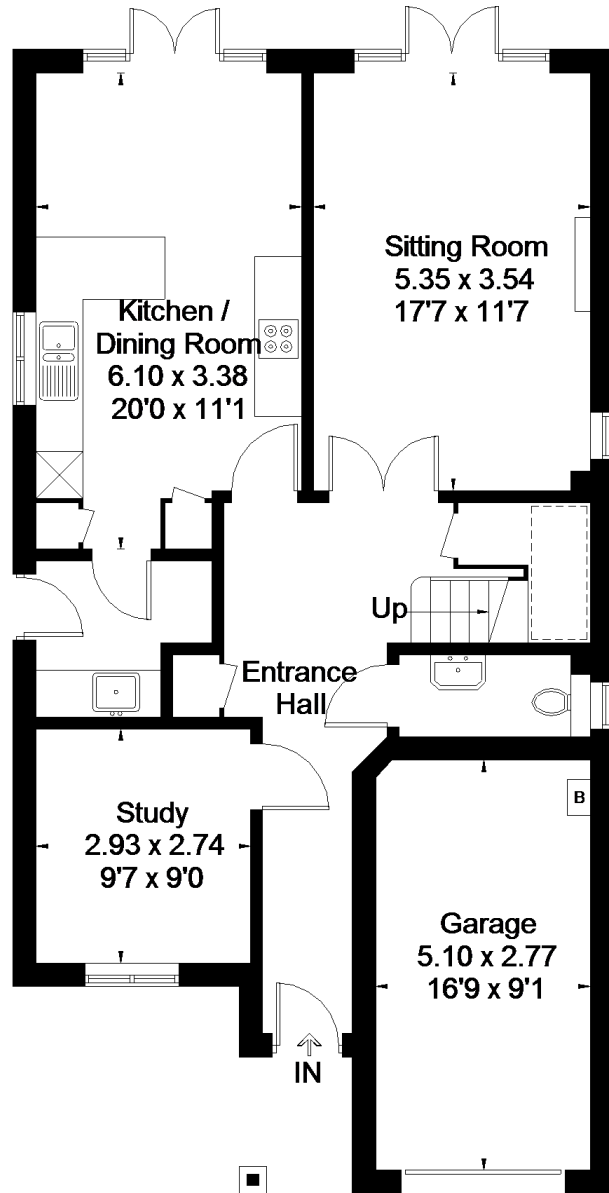


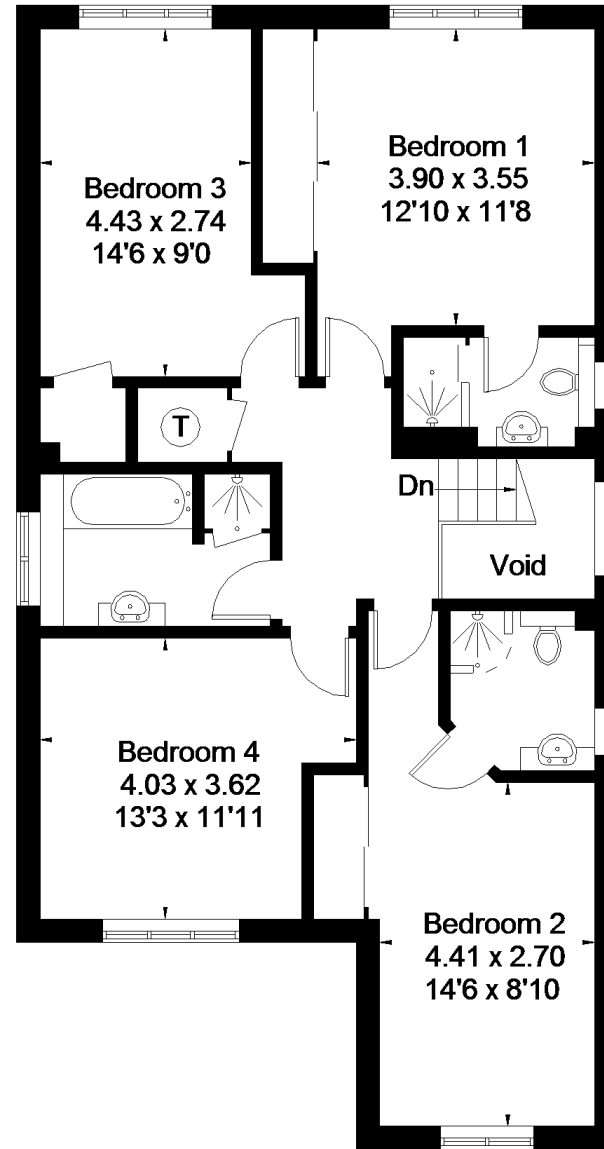
## Amersham Road, Hazleme

Approximate Gross Internal Area  
 House = 159.3 sq m / 1715 sq ft  
 (Excluding Void)  
 Garage = 14 sq m / 151 sq ft  
 Total = 173.3 sq m / 1866 sq ft



Ground Floor

= Reduced headroom below 1.5m / 5'0"



First Floor



Floorplanz © 2018  
 0203 9056099 Ref: 212555  
 This plan is for layout guidance only.  
 Drawn in accordance with  
 RICS guidelines. Not drawn to  
 scale, unless stated. Windows &  
 door openings are approximate.  
 Whilst every care is taken in the  
 preparation of this plan, please check  
 all dimensions, shapes & compass  
 bearings before making any  
 decisions reliant upon them.