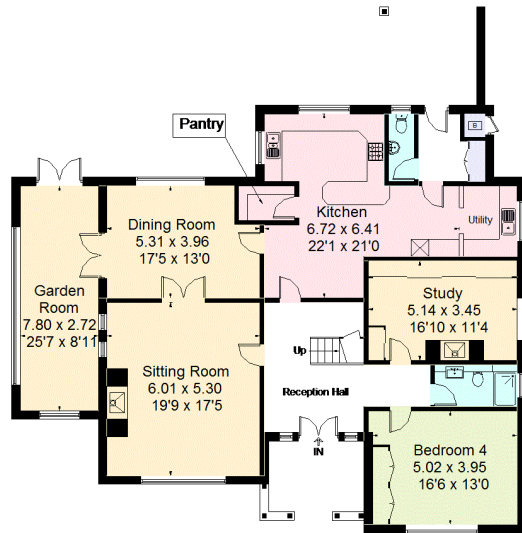
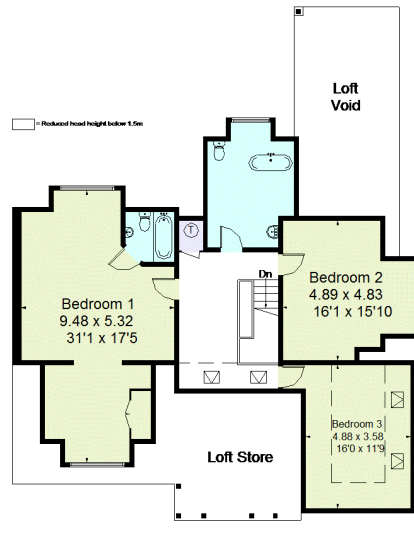


Approximate Area = 302.7 sq m / 3258 sq ft
 Garage = 60.7 sq m / 653 sq ft
 Outbuildings = 190.7 sq m / 2052 sq ft
 Total = 554.1 sq m / 5963 sq ft
 Including Limited Use Area (18 sq m / 193 sq ft)



Ground Floor
 Area = 191.8 sq m / 2062 sq ft
 (Limited Use Area = 3.3 sq m / 35 sq ft)



First Floor
 Area = 111.1 sq m / 1196 sq ft
 (Limited Use Area = 14.7 sq m / 158 sq ft)

