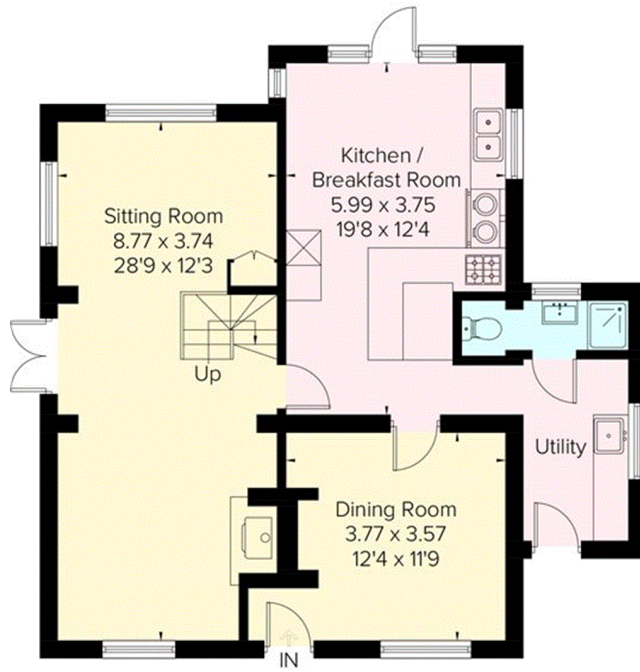
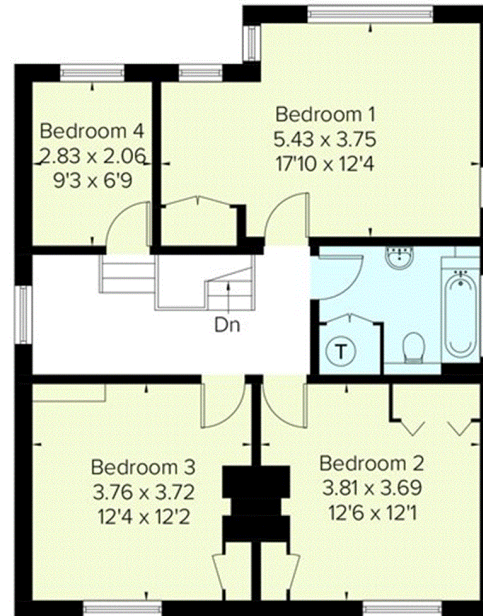




Approximate Floor Area = 151.8 sq m / 1633 sq ft
Garage = 17.4 sq m / 187 sq ft
Outbuildings = 9.6 sq m / 103 sq ft
Total = 178.8 sq m / 1923 sq ft



Ground Floor
Area = 80.4 sq m / 865 sq ft



First Floor
Area = 71.4 sq m / 768 sq ft

